



User's Manual

1394/USB Slim CD-R/RW Drive



BF-2100

Notice:

If you have any problem with this product, please do not open it or try to fix it by yourself. The warranty void if the seal is broken.

CONTENTS

1. Introduction	2
2. Package Content	2
3. Product Features	2
4. System Requirements	3
5. Part Name and Functions	3
6. Driver Installation (USB)	
6.1 Windows [®] 98 Installation	4
6.2 Windows [®] 98 un-installation	9
6.3 Windows [®] ME Installation	10
6.4 Windows [®] ME un-installation	13
6.5 Windows [®] 2000 Installation	14
6.6 Windows [®] 2000 un-installation	17
6.7 MAC Installation	18
6.8 MAC un-installation	20
7. FAQ	20
8. Disclaimer	21
9. FCC Statement	21
10. Technical Support	21

1. Introduction

This **1394/USB Slim CD-R/RW Drive** provides an easy way to carry and flexible interface solution.

This device supports both USB 1.1 standard and IEEE1394a compliance interface, which enables people to easily connect to Desktop PC or Notebook without opening case.

2. Package Content

Hardware:

- 1394/USB Slim CD-R/RW Drive
- Power adapter (DC-5V)
- USB A-B cable
- IEEE1394 6 pin to 6 pin cable
- IEEE1394 6pin to 4pin adaptor
- A Blank CD-RW disk
- Warranty Card
- Carry Bag

Software:

- Driver software
- User's Manual
- CD Recording Software

3. Product Features

- USB specification revision 1.1 compliant
- IEEE1394a compliant
- Portable CD-R/RW, easy way to backup files and share data
- CD-R/RW Drive feature
 - 1) WRITE: 8X-Speed(CD-R) /8X-Speed(CD-RW)
 - 2) READ: Max 24X-Speed
 - 3) Just Link: buffer under-run error prevention system
 - 4) Recommend Media
 - CD-R: TAIYO YUDEN, EBOSS, TDK, CyQ've, Acer, Super Blue
 - CD-RW: SIGMA

4. System Requirements

PC

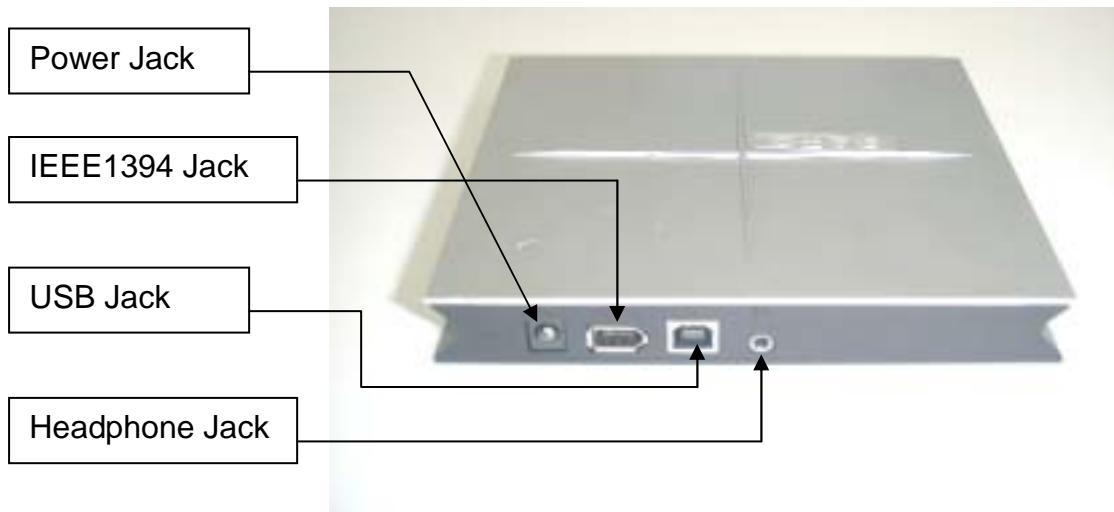
- IBM PC 486DX4-100 MHz or higher or compatible system
- Available USB port or IEEE1394 6pin/4pin port
- CD-ROM drive
- Windows® 98SE, Windows® ME, Windows® 2000

MAC

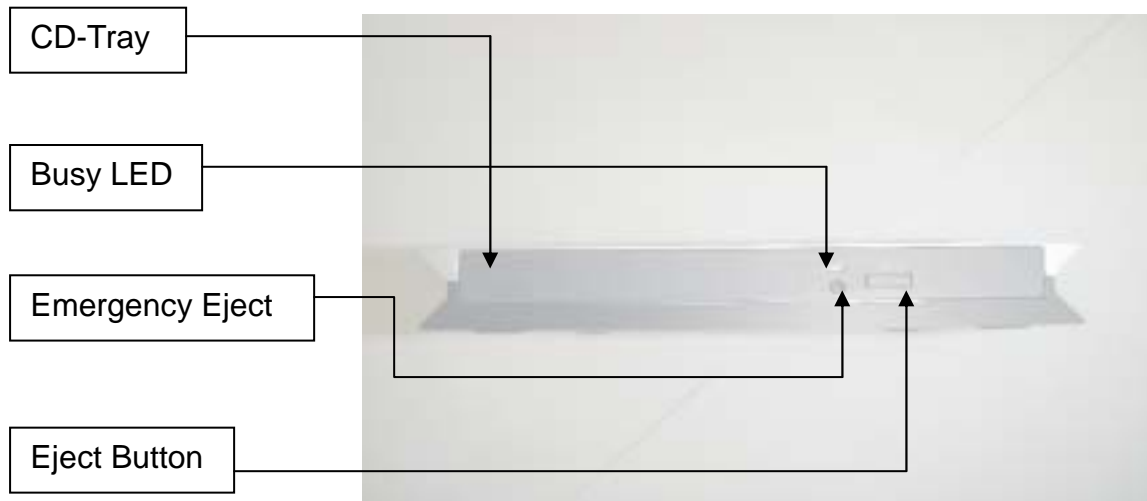
- Power PC G3, G4, or i-Mac
- Available USB port or IEEE1394 6pin, 4pin port
- CD-ROM drive
- Mac OS 9.1 or higher

5. Part Name and Functions

5.1 Back Panel



5.2 Front Panel



- 5.2.1 Busy LED: When read or write, Busy LED will blink on. Please do not turn off PC power when Busy LED been blinking turned on.
- 5.2.2 Emergency Eject: If you cannot use Eject Button to let the CD-Tray out when there is a media in CD-Tray. Please use tip of any object to press this hole and force the CD-Tray jump out.
- 5.2.3 Eject Button: OPEN/CLOSE CD-Tray.

6. Driver Installation (USB)

Attention: Only the USB interface need to install the driver , IEEE1394 does not need to install any driver.

6.1 Windows® 98 Installation

- 6.1.1 Connect the USB port of **1394/USB Slim CD-R/RW Drive** to USB port of PC with a USB cable.
- 6.1.2 The “**Add New Hardware Wizard**” dialog box appears as below, click on “**Next**” to continue.



- 6.1.3 Chose “**Search for the best driver for your device (Recommended)**” then click “**Next**”



- 6.1.4 Select “**Specify a location**” and type **D:\DRIVER\BF-2100\WINDOWS** (D: represents CD-ROM) in the dialog box, then click “**Next**”



- 6.1.5 Windows® will search the driver for this device. Make sure the driver that Windows® found is “**D:\DRIVER\BF-2100\WINDOWS\BFUSBWDM.INF**” , then click “**Next**”.



- 6.1.6 Click “**Finish**” to complete the setup procedure of “**BAFO USB-ATA/ATAPI Bridge Controller**”.



6.1.7 After Windows® had finished installed the driver for the “**BAFO USB-ATA/ATAPI Bridge Controller**” then it will start to install the driver for the “**BAFO USB-ATA/ATAPI Mass Storage**”. Click “**Next**” to continue.



6.1.8 Choose “**Search for the best driver for your device (Recommended)**” and click “**Next**”



6.1.9 Click on “**Specify a location**” and type “**D:\DRIVER\BF-2100\WINDOWS**” at dialog box , then click “**Next**”



6.1.10 Windows® will search the driver for this device, make sure the driver that Windows® found is “D:\DRIVER\BF-2100\WINDOWS\BFUSBMSD.INF” then click “Next”



6.1.11 Click on “Finish” to finish the installation procedure.



6.1.12 After Windows® installed all the driver, you have to check “My Computer”-“Control Panel”-“System”-“Device Manager” to make sure the driver has already installed , in the “Hard disk controllers” it will show a “BAFO USB-ATA/ATAPI Mass Storage Controller” and in the “Universal Serial Bus controller” it will show a new item of “BAFO USB-ATA/ATAPI Bridge Controller”



6.1.13 Double click on **“My Computer”** icon on the desktop , if the driver has already installed and can work properly, you can see a new CD-ROM icon and named **“E:”** appears on the Desktop.

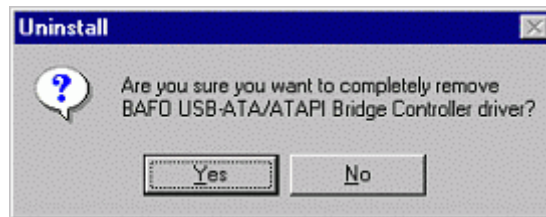


6.2 Windows® 98 un-installation

- 6.2.1 Put the driver software CD into the CD-ROM and open it. Run the **D:\DRIVER\BF-2100\WINDOWS\Uninst.EXE** program to un-install the driver.



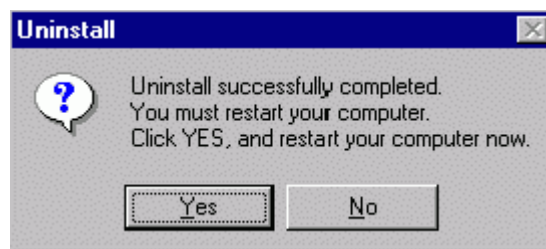
- 6.2.2 Click “**Yes**” to remove driver.



- 6.2.3 Remove the USB cable and click “**OK**”.



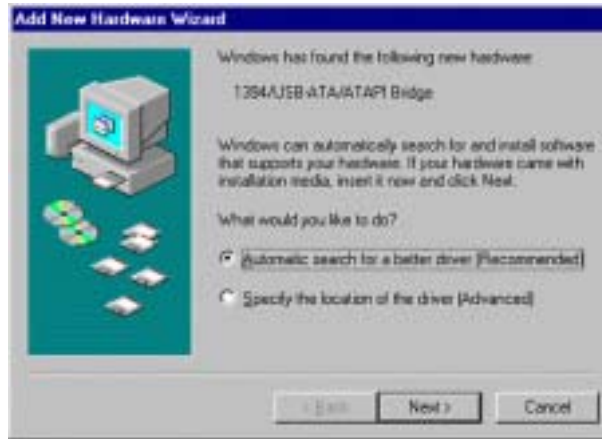
- 6.2.4 Click on “**Yes**” to restart computer and complete uninstall procedure.



6.3 Windows® ME installation

6.3.1 Connect the USB port of **1394/USB Slim CD-R/RW Drive** to PC's USB port via USB cable. Then **"Add New Hardware Wizard"** dialog box will appear as below, click on **"Automatic search for a better driver (Recommended)"** then click on **"Next"** to install the driver. (In this procedure, you have to put the driver CD into your CD-ROM).

6.3.2 Choose **"Automatic search for a better driver (Recommended)"**, then click **"NEXT"**.

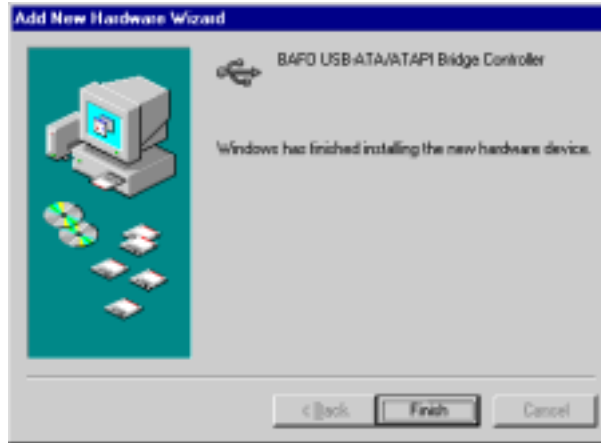


6.3.3 Windows® will search the driver for this device, make sure the driver that Windows® found is **"D:\DRIVER\BF-2100\WINDOWS\BFUSBMSD.INF"** then click **"Next"**



6.3.4 Windows® will search for the suitable driver for this device and installed it.

6.3.5 Click **"Finish"** to finish installing **"BAFO USB-ATA/ATAPI Bridge Controller"** driver.



6.3.6 After Windows® had finished installed the driver for the “**BAFO USB-ATA/ATAPI Bridge Controller**” it will start to install the driver for the “**BAFO USB-ATA/ATAPI Mass Storage**”. Then click “**Next**” to continue.



6.3.7 Choose “**Automatic search for a better driver (Recommended)**”, then click “**NEXT**”.

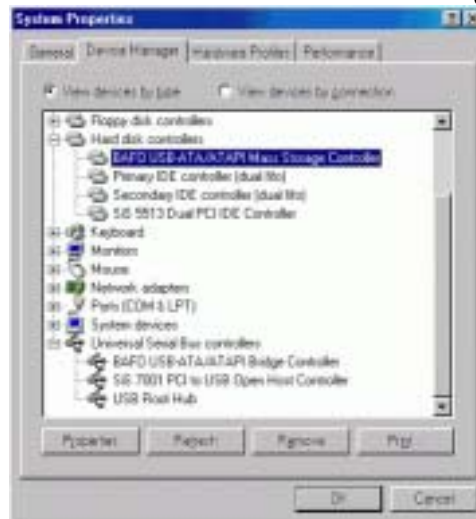


6.3.8 Windows® will search the driver for this device , make sure the driver that Windows® found is “**D:\DRIVER\BF-2100\WINDOWS\BFUSBMSD.INF**” then click “**Next**”

6.3.9 Click **“Finish”** to end this installation.



6.3.10 After Windows® installed all the driver, you have to check the **“System”-“Device Manager”** and make sure the driver has already installed , in the **“Hard disk controllers”** it will show a **“BAFO USB-ATA/ATAPI Mass Storage Controller”** and in the **“Universal Serial Bus controller”** it should has a new item of **“BAFO USB-ATA/ATAPI Bridge Controller”**

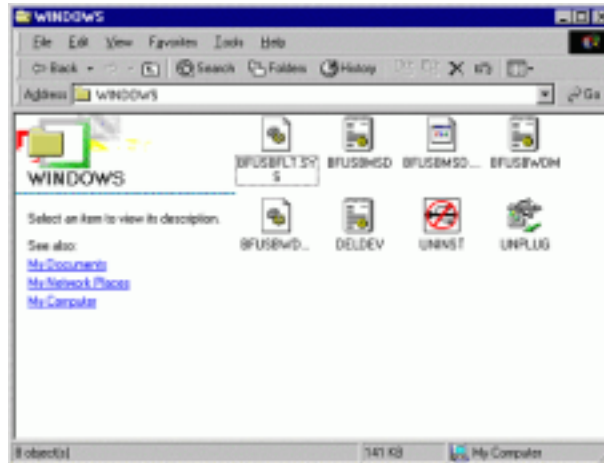


6.3.11 Double click on **“My Computer”** icon on the desktop , if the driver has already installed and can work properly, you can see a new CD-ROM icon and named **“E:”** appears on the Desktop.

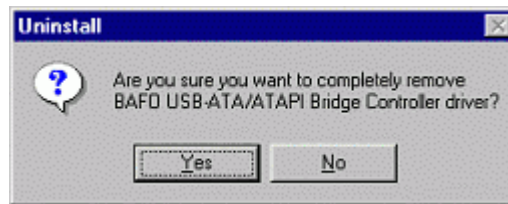


6.4 Windows® ME un-installation

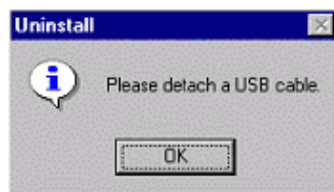
- 6.4.1 Put the driver software CD into the CD-ROM and open it. Run the **D:\DRIVER\BF-2100\WINDOWS\ Uninst.EXE** program to un-install the driver.



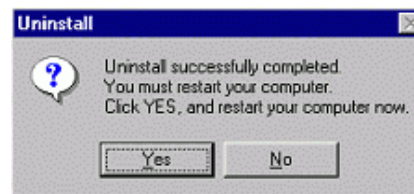
- 6.4.2 Click “Yes” to remove driver.



- 6.4.3 Remove USB cable and click “OK”.



- 6.4.4 Click on “Yes” to restart computer and complete uninstall procedure.



6.5 Windows® 2000 installation

6.5.1 Connect USB port of **1394/USB Slim CD-R/RW Drive** to USB port of PC with a USB cable.

6.5.2 The “**Welcome to the Found New Hardware Wizard**” dialog box appears as below. Click “**Next**” to continue.



6.5.3 The wizard starts to install device. Chose “**Search for a suitable driver for my device (recommended)**” then click “**Next**”.



6.5.4 Locate the driver files, select “**CD-ROM Drivers**” and “**Specify a location**”. Click “**Next**” to continue.



6.5.5 Locate detail driver files, type “D:\DRIVER\BF-2100\WINDOWS” at dialog box. Click “OK” to continue.



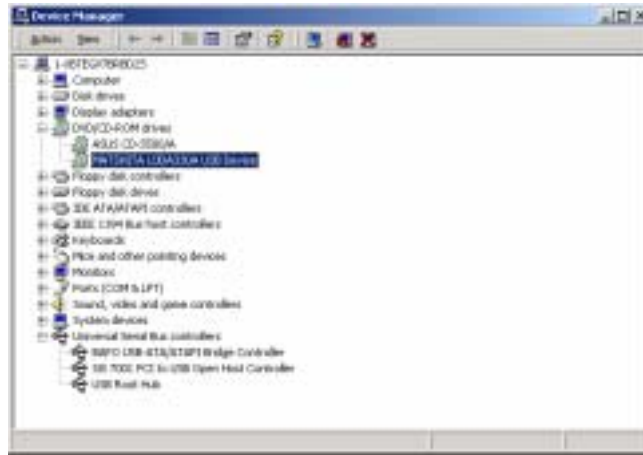
6.5.6 Wizard search for drivers for device. Make sure the device driver that Windows® found is “D:\DRIVER\BF-2100\WINDOWS\BFUSBWDW.inf” to continue.



6.5.7 Click “Finish” to finish this installation.



- 6.5.8 Click on “**Control Panel**”, “**System**”, “**Hardware**”, “**Device manager**” to check whether device be well installed. There should have “**BAFO USB-ATA/ATAPI Bridge Controller**” at “**Universal Serial Bus controller**”. “**DVD/CD-ROM drivers**” should have “**MATSHITA UJDA340A USB Device**”.



- 6.5.9 Double click on “**My Computer**” icon on the desktop , if the driver has already installed and can work properly, you can see a new CD-ROM icon and named “**E:**” appears on the Desktop .

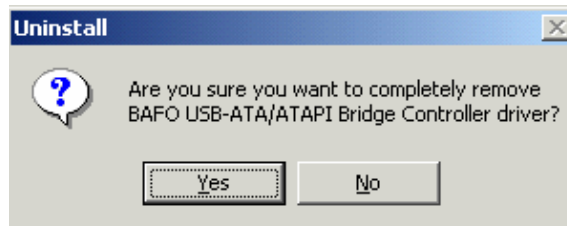


6.6 Windows® 2000 un-installation

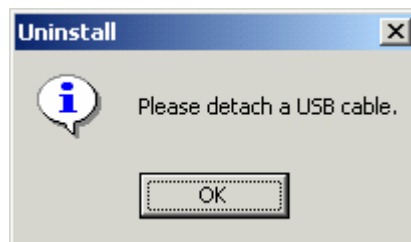
6.6.1 Put the driver software CD into the CD-ROM and open it. Run the **D:\DRIVER\BF-2100\WINDOWS\ Uninst.EXE** program to un-install the driver.



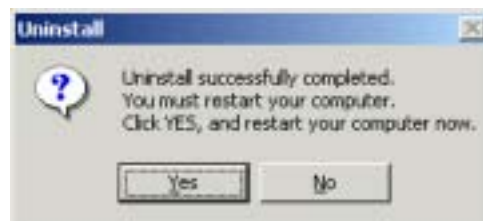
6.6.2 Click “Yes” to remove driver.



6.6.3 Plug out USB cable and click on “OK” to continue.



6.6.4 Click on “Yes” to re-start computer.



6.7 MAC installation

Attention: Please do not connect the 1394/USB CD-R/RW Drive to your Apple computer before install the driver.

6.7.1 Turn on your Apple computer and make sure that the USB port is enabled and work properly.

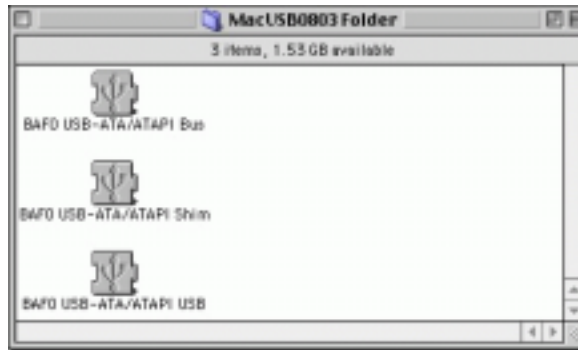
6.7.2 Insert **1394/USB Slim CD-R/RW Drive** driver CD into CD-ROM drive and copy the “**MacUSB0803.sit**” from “**D:\DRIVER\BF-2100\MAC**” to desktop, then run the “**MacUSB0803.sit**” to install driver.



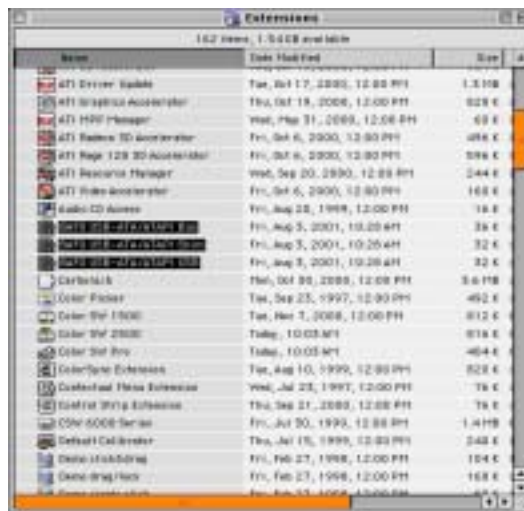
6.7.3 After the driver is installed, it will create a new folder and named “**MacUSB0803 Folder**” on desktop.



6.7.4 Open the “**MacUSB0803 Folder**” and you can see 3 files in this folder, “**BAFO USB-ATA/ATAPI Bus**” “**BAFO USB-ATA/ATAPI Shim**” “**BAFO USB-ATA/ATAPI USB**”.



6.7.5 Copy these three files to the “Macintosh HD”-“system Folder” - “Extensions”.



6.7.5 Now you can connect the **1394/USB CD-R/RW Drive** to your Apple computer , before you start to use this device, please check the “**Apple System Profile**” - “**Devices and volumes**”, you can see a new usb device in the USB 0 item and a new CD-ROM in the ATA 3 item”.



6.8 MAC un-installation

- 6.8.1 Throw the “**BAFO USB-ATA/ATAPI Bus**” “**BAFO USB-ATA/ATAPI Shim**” “**BAFO USB-ATA/ATAPI USB**” these three files to the trash can, and restart your computer again.

7 FAQ

- 7.1 Q: The “Add New Hardware Wizard” or “Found New Hardware Wizard” dialog box does not show up.

A: When plug-in IEEE1394, this dialog won't show up. Only plug-in USB this dialog box will appear. Please check following items.

- i). Power indicator on?
Make sure power adaptor properly plug into power jack.
- ii). Un-plug USB cable first and then plug in USB cable again.
- iii). Make sure USB plug be inserted into USB/1394 CD-R/RW Drive USB connector properly
- iv). Does computer and USB/1394 CD-R/RW has been connected by 1394 cable? IEEE1394 and USB can't be used simultaneous.

- 7.2 Q: In Windows[®] 98, system will down when Un-plug IEEE1394 cable.

A: You can install the Windows[®] 98 Second Edition 1394 Storage Supplement on a computer running Windows[®] 98 Second Edition from “Recommended Updates” section of the following Microsoft Windows[®] Update Web site

<http://Windowsupdate.microsoft.com>

You can also download this update from the following Microsoft Web site

<http://www.microsoft.com/Windows98/downloads/contents/WUCritical/1394/Default.asp>

- 7.3 Q: Can't hear any music.

A: Music output from “Headphone” terminal of SLIM CD-R/RW Drive. If you want to listening music from speaker then you should connect Speaker input to headphone output.

Also you have to have the software of media player.

- 7.4 Q: Can't play DVD Video.

A: This SLIM CD-R/RW Drive does not support DVD Media, so it cannot play the DVD Video

8 Disclaimer

Information in this document is subject to change without notice. The manufacturer does not make any representations or warranties (implied or otherwise) regarding the accuracy and completeness of this document and shall in no event be liable for any loss of profit or any other commercial damage, including but not limited to special, incidental, consequential, or other damages.

No part of this document may be reproduced or transmitted in any form by any means, electronic or mechanical, including photocopying, recording or information recording and retrieval systems without the express written permission of the manufacturer.

All brand names and product names used in this document are trademarks, or registered trademarks of their respective holders.

9 FCC Statement

This device generates and uses radio frequency and may cause interference to radio and television reception if not installed and used properly. This has been tested and found to comply with the limits of a Class B computing device in accordance with the specifications in Part 15 of FCC Rules. These specifications are designed to provide reasonable protection against such interference in a residential installation. However, there is no guarantee that interference will not occur in a particular installation. If this device does cause harmful interference to radio or television reception, which can be determined by plugging the device in and out, the user can try to correct the interference by one or more of the following measures:

- Reorient or relocate the receiving antenna.
- Increase the separation between the device and receiver.
- Connect the computer into an outlet on a circuit different from that to which the receiver is connected.
- Consult the dealer or an experienced radio/TV technician for help. Consult the dealer or an experienced radio/TV technician for help.

10 Technical Support

If you encounter any technical problem, please contact us through:

Taiwan First Line Electronics Corp.

**No. 40, Chung-Shan Road, Tu-Cheng Industrial Area, Taipei Hsian,
Taiwan, R.O.C.**

Web site: www.bafo.com.tw

OR

Quality Computer Accessories Inc. NJ

70 Ethel Road West, Unit 1, Piscataway, NJ 08854, USA

Web site: www.bafo.com