



User's Manual

Flash Drive



BF-23xx

CONTENT

1. Introduction-----	2
2. Package Content-----	2
3. Product Features-----	2
4. System Requirements-----	3
5. Part Name and Function-----	3
6. Driver Installation-----	4
6.1 Windows [®] 98 Driver Installation-----	4
6.2 Windows [®] 98 Driver Un-Installation-----	10
6.3 Windows [®] ME Driver Installation-----	11
6.4 Windows [®] ME Driver Un-Installation-----	14
6.5 Windows [®] 2000 Driver Installation-----	15
6.6 Windows [®] 2000 Driver Un-Installation-----	19
6.7 Windows [®] XP Driver Installation-----	20
6.8 Windows [®] XP Driver Un-Installation-----	23
6.9 MAC Driver Installation-----	24
6.10 MAC Driver Un-Installation-----	24
7. Utility Program Brief Description-----	25
8. FAQ-----	26
9. Disclaimer-----	27
10. FCC Statement-----	27
11. Technical Support-----	27

1. Introduction

The Flash Drive works as a friendly, secure, and lightweight removable mass storage device disk. It plugs through the USB port so your host computer will immediately detect and configure the removable drives without re-starting computer again.

Unlike most USB Flash Drive, it also comes with a security feature that allows you to require a password upon plugging the disk before use. This USB Flash Drive is partitioned into a 1-Mbytes accessory disk and main disk. Users have to enter the security password to gain access into the main disk. The 1MB accessory disk (no password) can also be used to pre-load the driver and utility program of the USB Flash Drive.

2. Package Content

Hardware:

- Flash Drive
- Strap for hanging on the neck
- USB A-A Cable

Software:

- Driver software CD
- User's Manual

3. Product Features

- Smart and secure removable data storage for business and personal use
- Easy Plug and Play Function
- Offers 16MB, 32MB, 64MB, 128MB, 256MB, and 512MB
- Password security feature to prevent disk access
- Embedded hub function allows partitioning of the USB Flash Disk into a 1MB auxiliary mass storage device disk and a primary secured main disk
- Data Write-Protect Switch
- Full compatible with the Universal Serial Bus Specification V1.1
- High performance write up to 800Kbyte/sec and read up to 970Kbyte/sec
- Windows mass storage device class compatible so no drive needed in Windows ME, 2000, XP, or above. Only requires security device driver.
- No separate power supply or battery required
- State-of-the-art NAND Flash Memories
- Shock resistant and data retention of at least 10 years
- Advanced power management mechanism

4. System Requirements

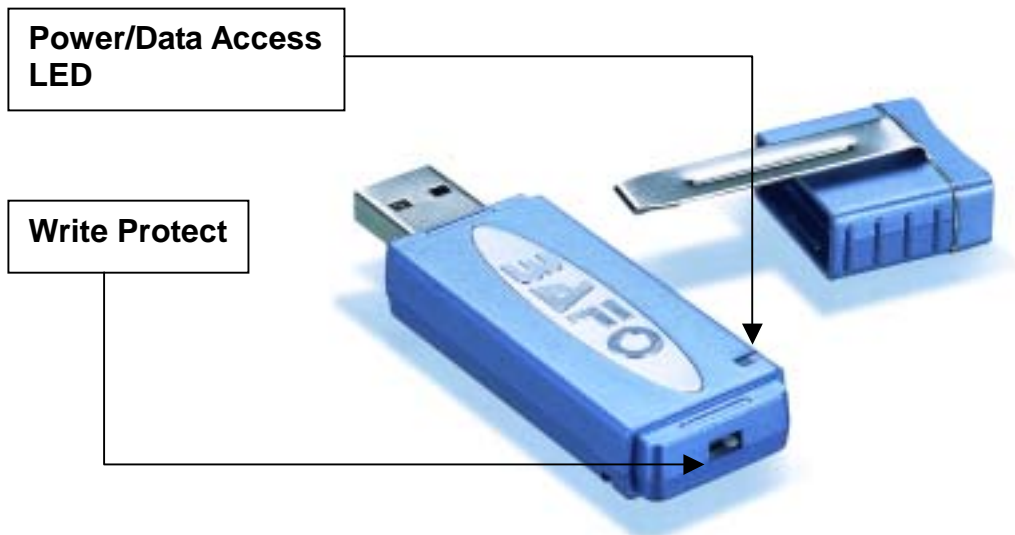
PC

- AMD or Intel Pentium 133MHz or better based computer
- Available USB port
- CD-ROM drive
- Windows[®] 98SE, Windows[®] ME, Windows[®] 2000, Windows[®] XP

MAC

- Power PC G3, G4, or I-Mac
- Available USB port
- CD-ROM drive
- Mac OS 8.x, OS 9.x and OS X (Without Security feature)

5. Part Name and Function



6 Driver Installation

6.1 Windows® 98 Installation

First step Windows® will install “Mass Storage Device”. (6.1.2 through 6.1.6)

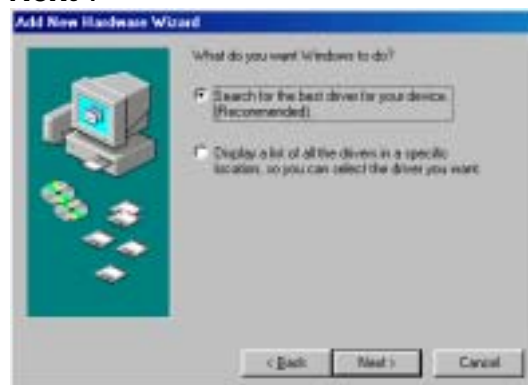
Second step Windows® will install “Security Device”. (6.1.7 through 6.1.14)

6.1.1 Connect the USB port of **Flash Drive** to PC with USB cable.

6.1.2 The “**Add New Hardware Wizard**” dialog box will appear as below, click “**Next**” to continue.



6.1.3 Choose “**Search for the best driver for your device (Recommended)**” then click “**Next**”.



6.1.4 Select “**Specify a location**” and type **D:\DRIVER\BF-23XX\WINDOWS** (D: represents CD-ROM) in the dialog box, then click “**Next**”



- 6.1.5 Windows® will search the driver for this device. Make sure the driver that Windows® found is “D:\DRIVER\BF-23XX\WINDOWS\PL2315U.INF” then click “Next”.



- 6.1.6 Click “Finish” to complete the installation procedure of “USB Mass Storage Device”



- 6.1.7 System will start to install “SECURITY” device. **If you don't need the “Security” feature then click on “Cancel” to exit** else click on “NEXT” to continue.



- 6.1.8 Choose “**Search for the best driver for your device (Recommended)**” then click “**Next**”.



- 6.1.9 Select “**Specify a location**” and type **D:\DRIVER\BF-23XX\WINDOWS** (D: represents CD-ROM) in the dialog box, then click “**Next**”.



- 6.1.10 Windows® will search the driver for this device. Make sure the driver that Windows® found is “**D:\DRIVER\BF-23XX\WINDOWS\JUPITER.INF**” then click “**Next**”.



6.1.11 When installing the “**Security**” driver, Windows® will pop up a “**JUPITER_Check Password 1.0.0.0**” dialog box, Click on “**OK**” to continue.



6.1.12 Click on “**More**” to “**JUPITER_Utility**” dialog box.



6.1.13 Click on “**Close**” to close “**JUPITER_Utility**” dialog box and continue.

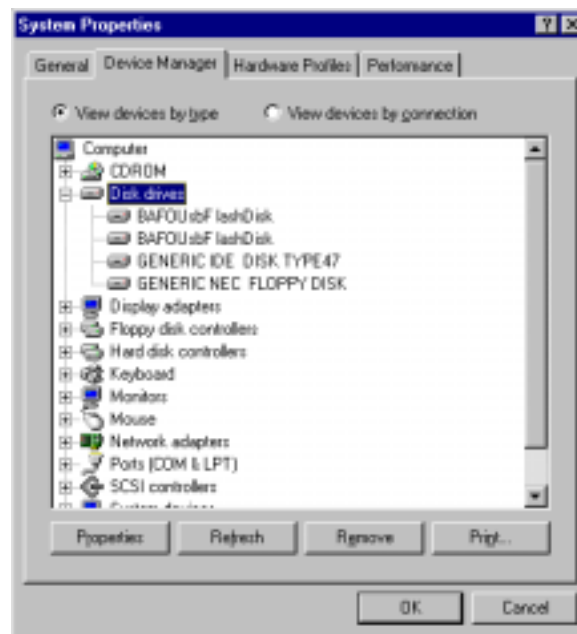


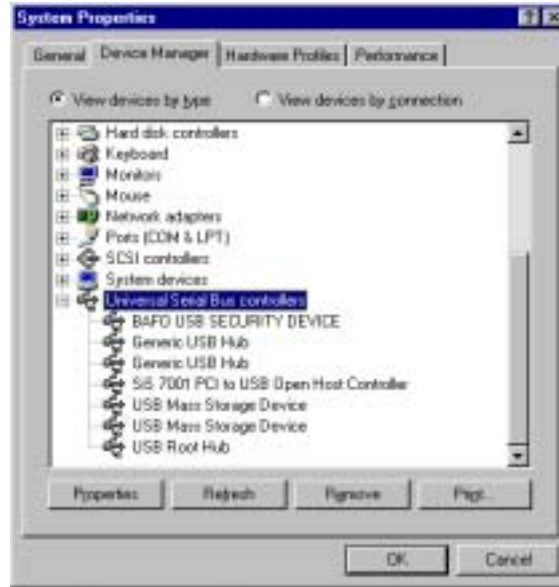
6.1.13 Click on “Finish” to complete the “**BAFO USB SECURITY DEVICE**”.



6.1.15 After Windows[®] installed all the driver, you have to check “**My Computer**”-“**Control Panel**”-“**System**”-“**Device Manager**” to make sure the driver has already installed. In the “**Disk Drives**” it will show two items of “**BAFO Usb Flash Disk**”. While on the “**Universal Serial Bus controller**”, you will find four additional devices: one “**Generic USB Hub**”, one “**BAFO USB SECURITY DEVICE**”, and two “**USB Mass Storage Device**”

If you did not install “Security” Device then “BAFO USB SECURITY DEVICE” will not show.





6.1.16 Double click on “My Computer” then you will find there are two new Removable Disk [E:] and [F:].



6.2 Windows® 98 un-installation

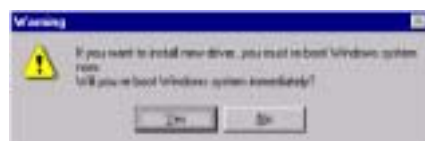
- 6.2.1 Click on “**My Computer**” and point to the path of “**D:\DRIVER\BF-23XX\WINDOWS**” (D: represents CD-ROM), click on “**Rm2315**” icon to un-install driver.



- 6.2.2 Click “**OK**” to remove “**JUPITER**” (Security AP).



- 6.2.3 Click on “**Yes**” to restart computer and complete uninstall procedure.



6.3 Windows® ME installation

Windows® will install “Security Device”

- 6.3.1 Connect the USB port of Flash Drive to PC with USB cable.
- 6.3.2 The “Add New Hardware Wizard” dialog box will appear as below.
- 6.3.3 **If you don't need “Security” feature then click “Cancel” to exit** else chose “Automatic search for a better driver [Recommended]” and click “Next” to continue.



- 6.3.4 When installing the “Security” driver, Windows® will pop up a “Password Check” dialog box, Click on “OK” to continue.



- 6.3.5 Click on “More” to continue.



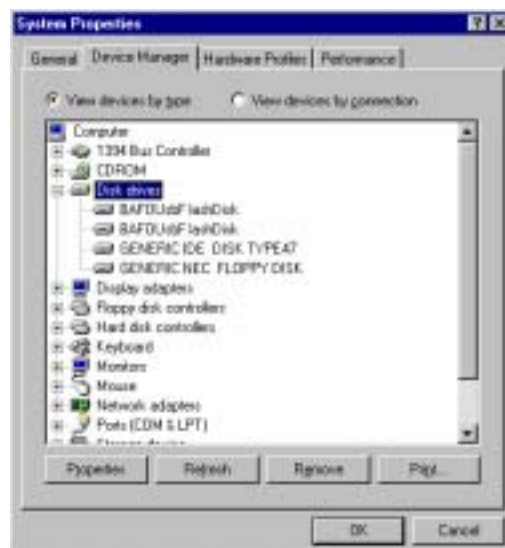
6.3.6 Click on “Close” to exit “**JUPITER_Utility**”.



6.3.7 Click on “**Finish**” to complete the “**BAFO USB SECURITY DEVICE**” installation.



6.3.8 You should check “**My Computer**”-“**Control Panel**”-“**System**”-“**Device Manager**” to make sure the driver has already installed. Then, in the “**Disk Drives**” it will show two “**BAFO USB Flash Disk**”. In the “**Hard disk controllers**” it will show two “**USB Mass Storage Device**”, one “**Generic USB Hub**” and one “**BAFO USB SECURITY DEVICE**” (If you did not install “**Security**” device then “**BAFO USB SECURITY DEVICE**” will not show).





6.3.9 Double click on “My Computer” then you will find two new items, that is, Removable Disk [E:] and Removable Disk [F:].



6.4 Windows® ME un-installation

If you did not install “Security” Device then you don’t have to un-install it.

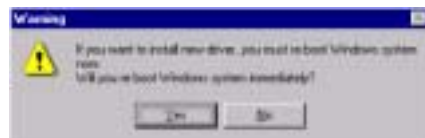
- 6.4.1 Click on “**My Computer**” and point to the path of “**D:\DRIVER\BF-23XXWINDOWS**” (D: represents CD-ROM), click on “**Rm2315**” icon to un-install driver.



- 6.4.2 Click “**OK**” to remove “**JUPITER**” (Security AP).



- 6.4.3 Click on “**Yes**” to restart computer and complete uninstall procedure.



6.5 Windows® 2000 installation

Windows® will install “Security Device”.

- 6.5.1 Connect the USB port of Flash Drive to PC with USB cable.
- 6.5.2 The “Add New Hardware Wizard” dialog box will appear as below.
- 6.5.3 **If you don't need “Security” feature then click “Cancel” to exit** else choose “Automatic search for a better driver [Recommended]” and click “Next” to continue.



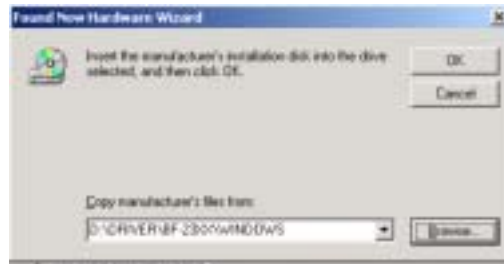
- 6.5.4 Choose “Search for a suitable driver for my device (Recommended)” then click “Next”.



- 6.5.5 Choose “CD-ROM drives” and “Specify a location” then click on “Next” to continue.



6.5.6 Type **D:\DRIVER\BF-23XX\WINDOWS** (D: represents CD-ROM) in the dialog box, then click **“Next”** to continue.



6.5.7 Windows® will search the driver for this device. Make sure the driver that Windows® find is **“d:\driver\bf-23xx\windows\jupiter.inf”** then click **“next”** to continue.



6.5.8 While Windows® install the driver, in the same time it will pop up a **“JUPITER_Check Password 1.0.0.0”** dialog box. Click **“OK”** to continue.



6.5.9 Click “More” to continue.



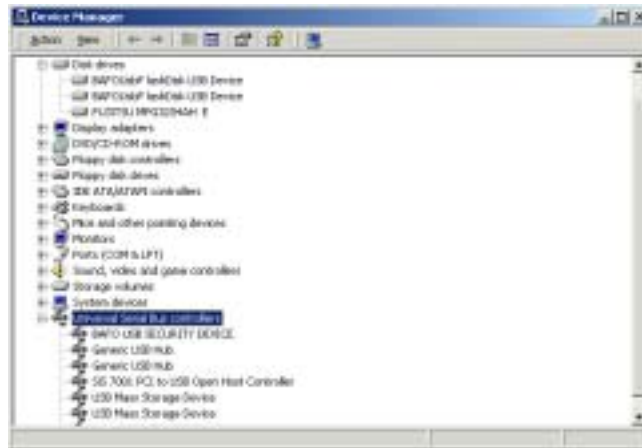
6.5.10 Click on “Close” to exit “JUPITER_Utility”.



6.5.11 Click on “Finish” to complete “BAFO USB SECURITY DEVICE”.



6.5.12 Please check **“My Computer”-“Control Panel”-“System”-“Hardware”-“Device Manager”** to make sure the driver has already installed. Then, in the **“Disk Drives”** it will show two **“BAFO Usb Flash Disk USB Device”**. In the **“Universal Serial Bus Controller”** it will show one **“Generic Hub”**, one **“BAFO USB SECURITY DEVICE”** and two if you did not install **“Security”** device then. **If you did not install “Security” device then “BAFO USB SECURITY DEVICE” won’t show up.**



6.5.13 Double click on **“My Computer”** then will find two new items, that is, **“Removable Disk (F:)”** and **“Removable Disk (E:)”**



6.6 Windows® 2000 un-installation

If you did not install “Security” Device then you don’t have to un-install it.

- 6.6.1 Click on **“My Computer”** and point to the path of **“D:\DRIVER\BF-23XX\WINDOWS”** (D: represents CD-ROM), click on **“Rm2315.EXE”** icon to un-install driver.



- 6.6.2 Click on **“OK”** to remove **“Jupiter”** (Security AP).



- 6.6.3 Click on **“Yes”** to re-boot system.



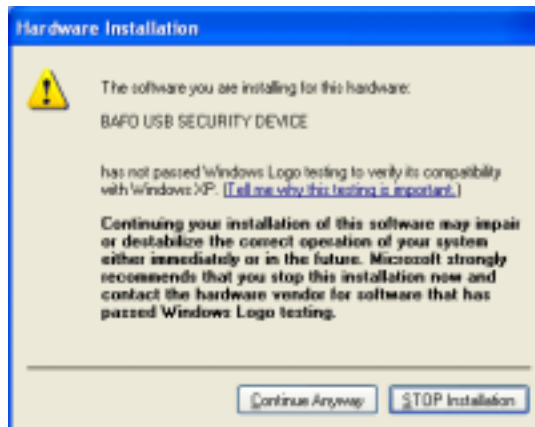
6.7 Windows® XP installation

Windows® will install “Security Device”.

- 6.7.1 Connect the USB port of Flash Drive to PC with USB cable.
- 6.7.2 The “Add New Hardware Wizard” dialog box will appear as below.
- 6.7.3 **If you don't need “Security” feature then click “Cancel” to exit** else choose “Install the software automatically [Recommended]” and click “Next” to continue.



- 6.7.4 Windows® will show a warning message about “software not pass Windows® logo”, click on “Continue Anyway” to continue.



- 6.7.5 While the wizard installs the driver, Windows® will show a dialog box of “JUPITER_Check Password 1.0.0.0”. Click on “OK” to continue.



6.7.6 Click on “**More**” to continue.



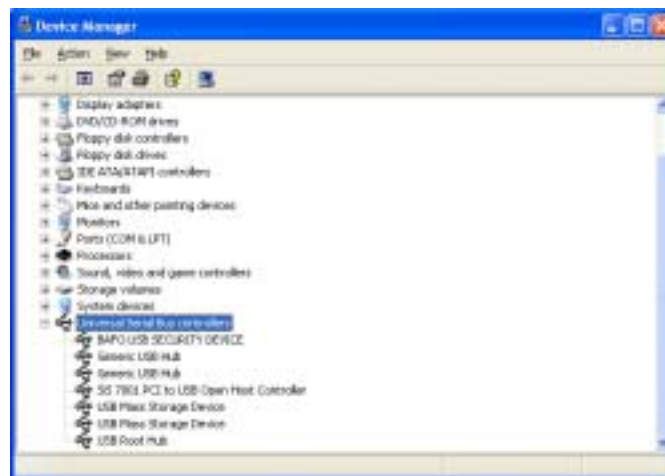
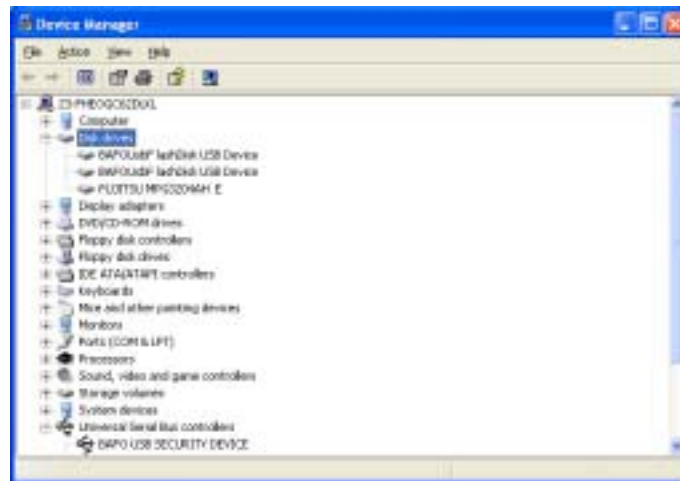
6.7.7 Click on “**Close**” to exit “**JUPITER_Utility**”.



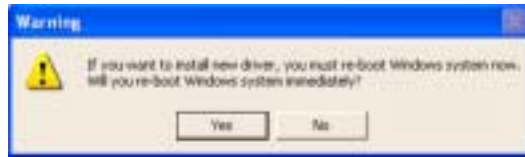
6.7.8 Click on “**Finish**” to complete the installation of “**BAFO USB SECURITY DEVICE**”.



- 6.7.9 Please let Mouse point to “My Computer” click on right key -“Properties”-“Hardware”-“Device Manager” to make sure the driver has already installed.
- 6.7.10 Then, in the “Disk Drives” it will show two “BAFO USB Flash Device”.
- 6.7.11 In the “Universal Serial Bus Controller” which will have one “Generic USB Hub”, one “BAFO USB SECURITY DEVICE” and two “USB Mass Storage Device”. **If you did not install “Security” Device then it will not show “BAFO USB SECURITY DEVICE”.**

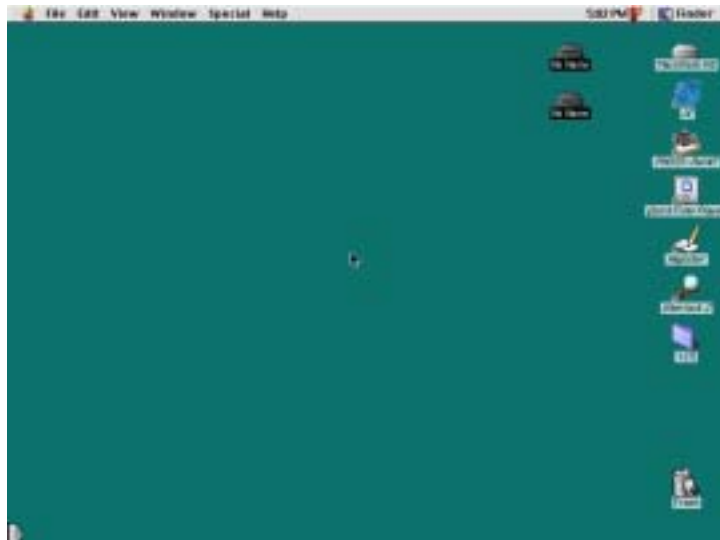


6.8.3 Click on “**Yes**” to re-boot the system.



6.9 MAC installation

- 6.9.1 Turn on your Apple computer and make sure that the USB port is enabled and work properly.
- 6.9.2 Plug in the **Flash Drive** to your MAC, the system will auto detect the new device and show up two disk icon on the desktop.



- 6.9.3 To make sure the **Flash Drive** can works properly, you have to check the “**Apple System Profiler**”-“**Devices and volumes**”, you can see two items under the USB item



6.10 MAC un-installation

6.10.1 Throw the new disk icon to the **Trash**, and restart your computer again.

7. Utility Program Brief Description

Double-click on the **JUPITER.exe** file program on your CD.

Click on "**OK**" when you did not set your password and "**More**" to "**JUPITER_Utility**".

If you already set your password then enter the correct password and click "**OK**" then click "**More**" to "**JUPITER_Utility**".

There are 5 kinds of feature provided by this utility:

7.1 Set/Check Password

This function allows you to verify the password of the Flash Drive. First it will prompt you to enter the password and if it is incorrect, a warning message will appear.

After Set the password, there will have dialog box "Password set successfully". Click on "**OK**" then another dialog box asks if you want to "Save" password. If you want to save password then specify path and give a filename without extension file name. Word, Excel and Notepad could read this file. The content of file like "My Device xxx", "My Device" is device name and xxx is the password you have set.

7.2 Change Password

This function allows you to change the password of your Flash Drive. First it will prompt you to enter the old or existing password.

After password has been changed, there will have dialog box “Password Changed successfully”. Click on “**OK**” then another dialog box asks if you want to “Save” password. If you want to save password then specify path and give a filename without extension file name. Word, Excel and Notepad could read this file. The content of file like “My Device xxx”, “My Device” is device name and xxx is the password you have set.

7.3 Clear Password

This function allows you to clear or erase the password of Flash Drive. Take note that if you clear password of the Flash Disk, you are disabling the disk security function.

7.4 Change Device Name

This function allows you to change the device name of Flash Drive.

This is useful if you have more than one USB Flash Drive and want to identify them.

7.5 Format

This allows you to format and label the Flash Disk. Following these steps:

- 1). Click on Format and enter the correct password. On the format windows, click on the storage device that you want to format. The accessory Storage item is the 1MB partitioned Flash Drive while the main storage is secured Flash Drive. If you also want to label the drive, enter the volume label name for the storage you want to format. Then click “**Start**”.
- 2). Before starting to format, a warning message will appear to verify if you want to continue. Click “**OK**” to continue formatting. When finished, a Window message will appear telling you that format is successful. However, it is required that you unplug and re-plug the Flash Drive afterwards to allow Windows to refresh. Use the Unplug/Eject icon on the taskbar to stop Flash Drive.

Remark: There is one program “**JFormat .exe**” on your CD; it could format your data and Password. Double click on “**JFormat.exe**” to execute this program. **Please note that when your password been formatted and in the same time you will lose your data.**

8. FAQ

Q: When Flash Driver be plugged into PC USB Port, but “Add New Hardware Wizard” does not show up. What should I do?

A: Plug out Flash Driver then plugs in again and make sure it is well plug in.

Q: After finish installing driver and I just find one “**BAFO Usb Flash Disk**” at “Disk Driver” of “Device Manager”. What is wrong about that?

A: It is because you try to install “Security” Device but fail. Please remove “Security” Device and install again.

Q: *Is there any way I can do when forgetting “Password”?*

A: There are two ways you could do.

- 1). Execute “JFormat.exe” at Driver CD, to format data and Password.
- 2). When you set or change password, save your password at your Hard Disk.

Q: After Windows® ME finish installing, there will have Green Question Mark appear before “Generic USB Hub” and “USB Mass Storage Device” which under “Universal Serial Bus Controller” of “Device Manager”.

A: That is because driver’s “Mass Storage” spec. Including Windows® ME “Mass Storage” spec. this difference cause the appearance of Green Question Mark, but you still could use this device normally.

Q: When I plug off the flash drive from USB port, it shows the “Unplug or Eject hardware” warning message, and what should I do?

A: There is an icon at bottom of right hand side, which is “Unsafe Removal of Device”. Double click on this icon and remove two of “Mass Storage Device”. Then remove Flash Driver it won’t show the warning message.

9. Disclaimer

Information in this document is subject to change without notice. The manufacturer does not make any representations or warranties (implied or otherwise) regarding the accuracy and completeness of this document and shall in no event be liable for any loss of profit or any other commercial damage, including but not limited to special, incidental, consequential, or other damages.

No part of this document may be reproduced or transmitted in any form by any means, electronic or mechanical, including photocopying, recording or information recording and retrieval systems without the express written permission of the manufacturer.

All brand names and product names used in this document are trademarks, or registered trademarks of their respective holders.

10. FCC Statement

This device generates and uses radio frequency and may cause interference to radio and television reception if not installed and used properly. This has been tested and found to comply with the limits of a Class B computing device in accordance with the specifications in Part 15 of FCC Rules. These specifications are designed to provide reasonable protection against such interference in a residential installation. However, there is no guarantee that interference will not occur in a particular installation. If this device does cause harmful interference to radio or television reception, which can be

determined by plugging the device in and out, the user can try to correct the interference by one or more of the following measures:

- Reorient or relocate the receiving antenna.
- Increase the separation between the device and receiver.
- Connect the computer into an outlet on a circuit different from that to which the receiver is connected.
- Consult the dealer or an experienced radio/TV technician for help. Consult the dealer or an experienced radio/TV technician for help.

11. Technical Support

If you encounter any technical problem, please contact us through:

Taiwan First Line Electronics Corp.

4F, No. 36-1, Huang Hsi Street, Shilling Dis. Taipei, Taiwan, R.O.C.

Web site: www.bafo.com.tw

OR

Quality Computer Accessories Inc. NJ

70 Ethel Road West, Unit 1, Piscataway, NJ 08854, USA

Web site: www.bafo.com