



User's Manual

USB2.0 Flash Device



BF-25xx

CONTENT

1. Introduction-----	2
2. Package Content-----	2
3. Product Features-----	2
4. System Requirements-----	3
5. Part Name and Function-----	3
6. Driver Installation-----	3
6.1 Windows [®] 98 Driver Installation-----	3
6.2 Windows [®] ME Driver Installation-----	7
6.3 Windows [®] 2000 Driver Installation-----	8
6.4 Windows [®] XP Driver Installation-----	8
6.5 MAC Driver Installation-----	9
6.6 MAC Driver un-Installation-----	9
7. FAQ-----	10
8. Disclaimer-----	10
9. FCC Statement-----	10
10. Technical Support-----	11

1. Introduction

The Flash Drive works as a friendly and lightweight removable mass storage device disk. It plugs through the USB port so your host computer will immediately detect and configure the removable drives without re-starting computer again.

This Flash Drive is USB2.0 compliance and its speed faster than USB1.1 by far. It supports up to 512Mbytes.

2. Package Content

Hardware:

- Flash Drive
- Strap for hanging on the neck
- USB A-A Cable

Software:

- Driver software CD
- User's Manual

3. Product Features

- Smart removable data storage for business and personal use
- Easy Plug and Play Function
- Offers 16MB, 32MB, 64MB, 128MB, 256MB, and 512MB
- Data Write-Protect Switch
- Full compatible with the Universal Serial Bus Specification V2.0 and backward compatible to V1.1
- High performance write up to 2.3Mbyte/sec and read up to 7Mbyte/sec
- Windows mass storage device class compatible so no drive needed in Windows ME, 2000, XP, or above.
- No separate power supply or battery required
- State-of-the-art NAND Flash Memories
- Shock resistant and data retention of at least 10 years
- Advanced power management mechanism

4. System Requirements

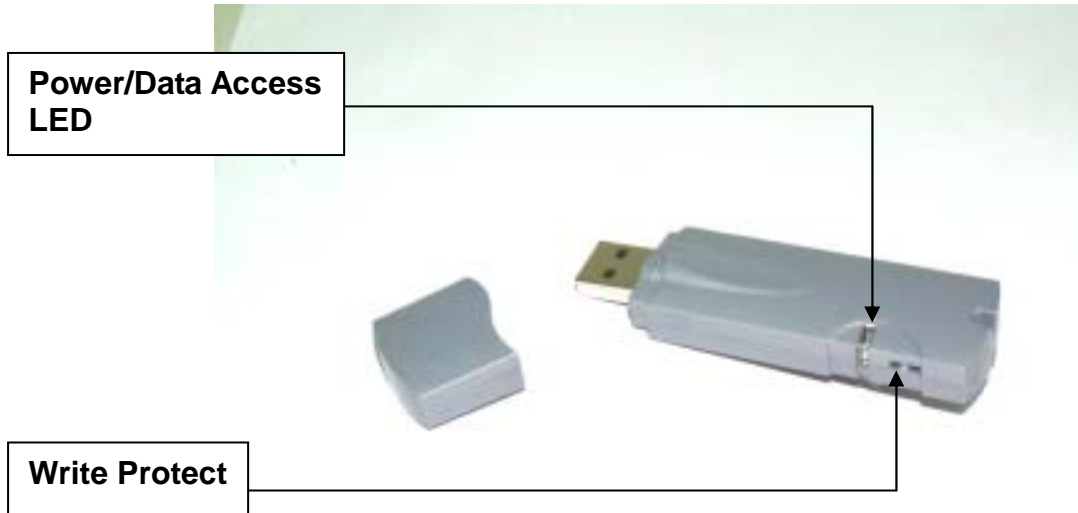
PC

- AMD or Intel Pentium 133MHz or better based computer
- Available USB port
- CD-ROM drive
- Windows® 98SE, Windows® ME, Windows® 2000, Windows® XP

MAC

- Power PC G3, G4, or I-Mac
- Available USB port
- CD-ROM drive
- Mac OS 8.x, OS 9.x, OS X

5. Part Name and Function



6 Driver Installation

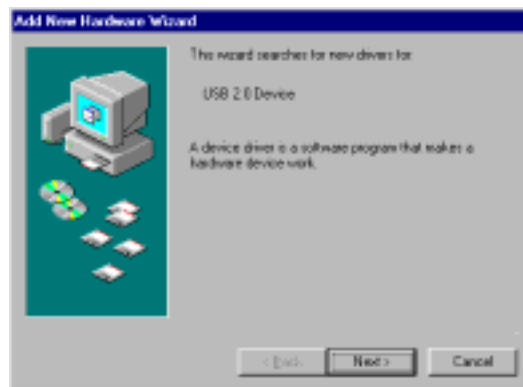
6.1 Windows® 98 Installation

First step Windows® will install “NEC uPD720121 USB-ATA/ATAPI Bridge device driver”. (6.1.2 through 6.1.6)

Second step Windows® will install “USB Mass Storage”. (6.1.7 through 6.1.11)

6.1.1 Connect the USB port of **Flash Device** to PC with USB cable.

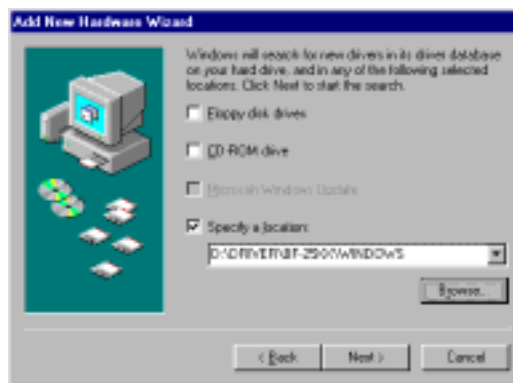
6.1.2 The “**Add New Hardware Wizard**” dialog box will appear as below, click “**Next**” to continue.



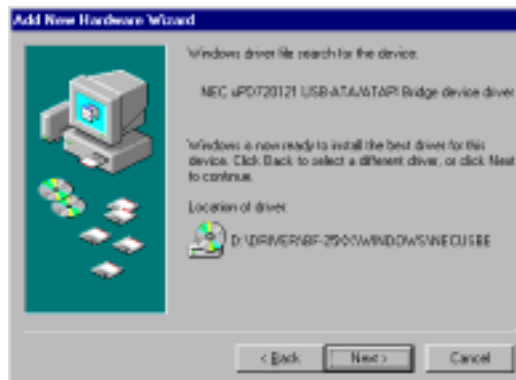
6.1.3 Choose “**Search for the best driver for your device (Recommended)**” then click “**Next**”.



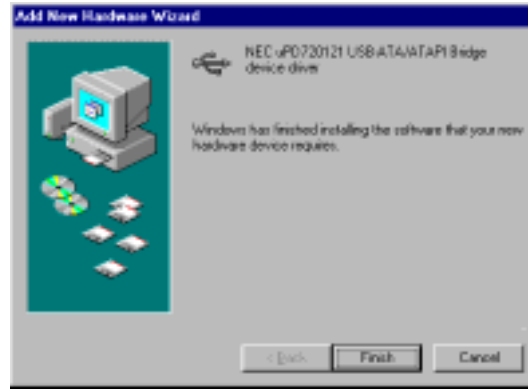
6.1.4 Select “**Specify a location**” and type **D:\DRIVER\BF-25XX\WINDOWS** (D: represents CD-ROM) in the dialog box, then click “**Next**”



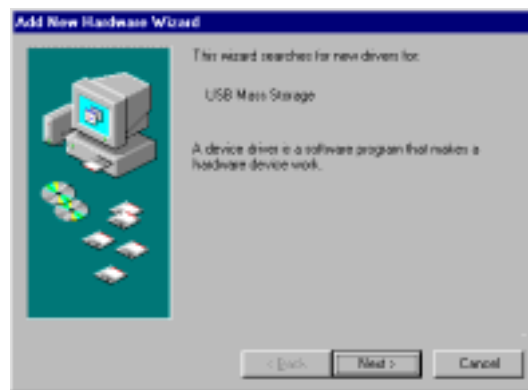
6.1.5 Windows® will search the driver for this device. Make sure the driver that Windows® found is “**D:\DRIVER\BF-25XX\WINDOWS\NECUSBBO.INF**” then click “**Next**”.



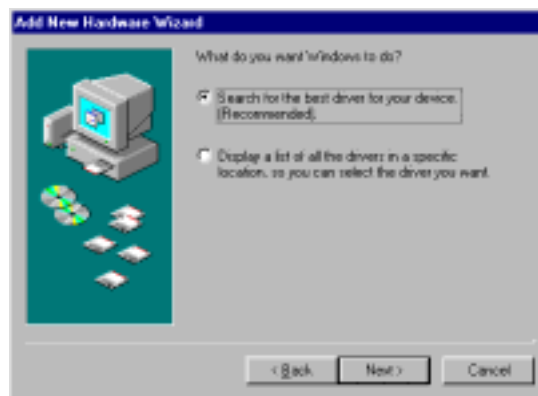
6.1.6 Click “**Finish**” to complete the installation procedure of “**NEC uPD720121 USB-ATA/ATAPI Bridge**”



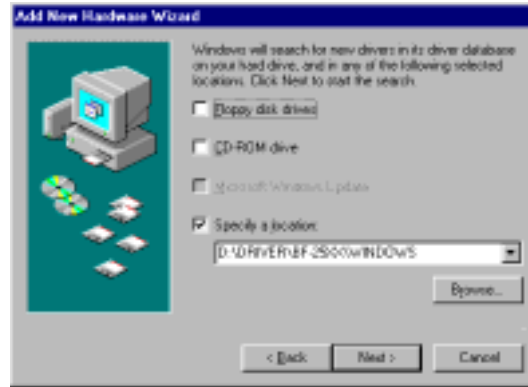
6.1.7 System will start to install “**USB Mass Storage**” device. Click on “**NEXT**” to continue.



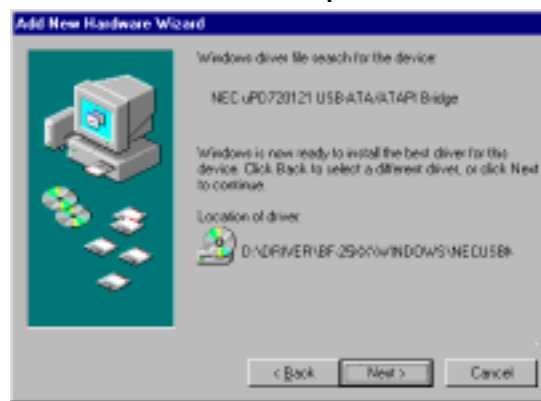
6.1.8 Choose “**Search for the best driver for your device (Recommended)**” then click “**Next**”.



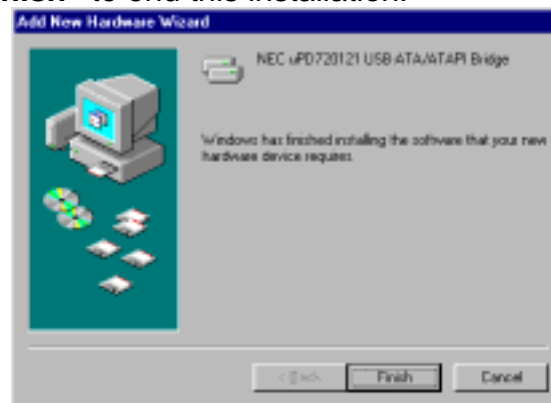
6.1.9 Select “**Specify a location**” and type **D:\DRIVER\BF-25XX\WINDOWS** (D: represents CD-ROM) in the dialog box, then click “**Next**”.



6.1.10 Windows® will search the driver for this device. Make sure the driver that Windows® found is “D:\DRIVER\BF-25XX\WINDOWS\NECUSBMP.INF” then click “Next”.



6.1.11 Click “Finish” to end this installation.

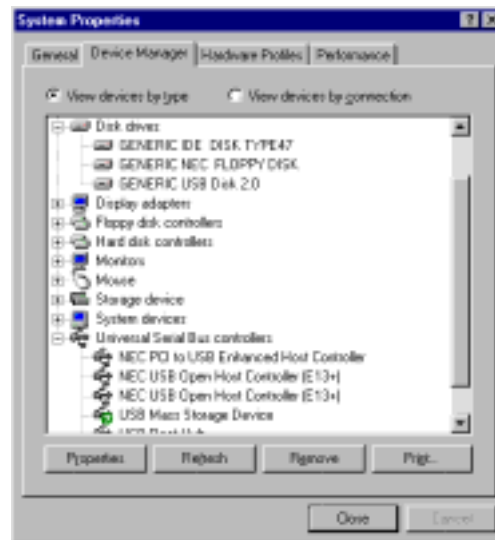


6.1.12 Double click on “My Computer” then you will find there is new Removable Disk [F:].



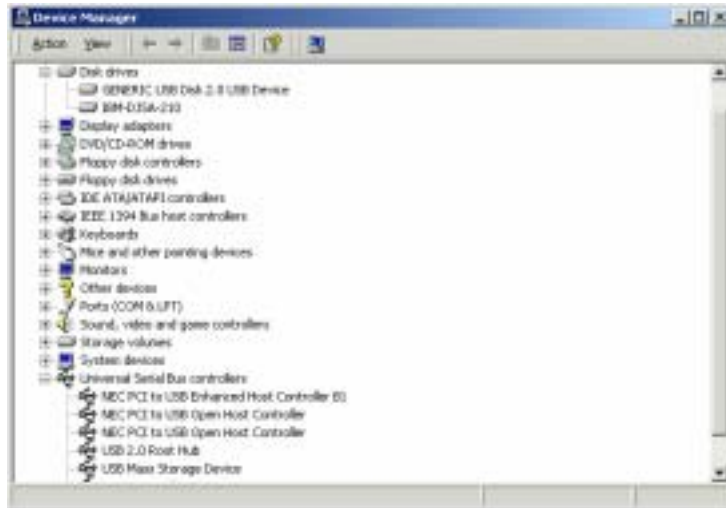
6.2 Windows® ME installation

- 6.2.1 Connect the USB port of Flash Device to PC with USB cable.
- 6.2.2 Windows will automatically install driver for the Flash Drive.
- 6.2.3 After installation, you could find a new storage device “**Generic USB Disk 2.0**” at “**Disk Drives**” of “**Device Manager**”.



6.3 Windows® 2000 installation

- 6.3.1 Connect the USB port of Flash Device to PC with USB cable.
- 6.3.2 Windows will automatically install driver for the Flash Drive.
- 6.3.3 After installation, you could find a new storage device “**Generic USB Disk 2.0 USB Device**” at “**Disk Drives**” of “**Device Manager**”.



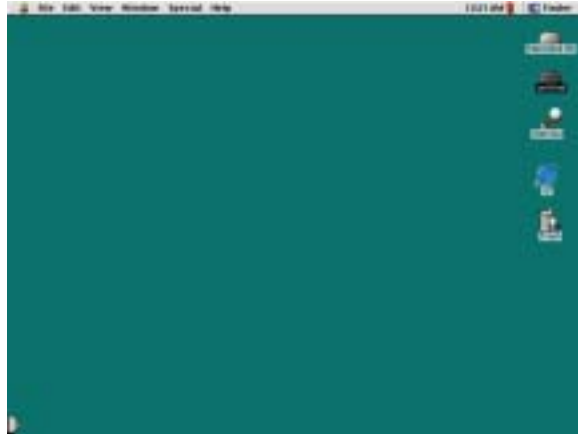
6.4 Windows® XP installation

- 6.4.1 Connect the USB port of Flash Device to PC with USB cable.
- 6.4.2 Windows will automatically install driver for the Flash Ddevice.
- 6.4.3 After installation, you could find a new storage device “**Generic USB Disk 2.0 USB Device**” at “**Disk Drives**” of “**Device Manager**”.



6.5 MAC installation

- 6.5.1 Turn on your Apple computer and make sure that the USB port is enabled and work properly.
- 6.5.2 Plug in the **Flash Device** to your MAC, the system will auto detect the new device and show up two disk icon on the desktop.



- 6.5.3 To make sure the **Flash Device** can works properly, you have to check the “**Apple System Profiler**”-“**Devices and volumes**”, you can see two items under the USB item



6.6 MAC un-installation

- 6.6.1 Throw the new disk icon to the **Trash**, and restart your computer again.

7. FAQ

Q: When Flash Device be plugged into PC USB Port, but “Add New Hardware Wizard” does not show up. What should I do?

A: Plug out Flash Device then plugs in again and make sure it is well plug in.

Q: Why the speed of coping files still as slow as USB1.1 Flash Device?

A: Please check the USB Port which you have connected is USB2.0 Port.

Q: When I plug off the flash drive from USB port, it shows the “Unplug or Eject hardware” warning message, what should I do?

A: There is a icon at bottom of right hand side which is “Unsafe Removal of Device”. Double click on this icon and remove two of “Mass Storage Device”. Then remove Flash Driver it won’t show the warning message.

8. Disclaimer

Information in this document is subject to change without notice. The manufacturer does not make any representations or warranties (implied or otherwise) regarding the accuracy and completeness of this document and shall in no event be liable for any loss of profit or any other commercial damage, including but not limited to special, incidental, consequential, or other damages.

No part of this document may be reproduced or transmitted in any form by any means, electronic or mechanical, including photocopying, recording or information recording and retrieval systems without the express written permission of the manufacturer.

All brand names and product names used in this document are trademarks, or registered trademarks of their respective holders.

9. FCC Statement

This device generates and uses radio frequency and may cause interference to radio and television reception if not installed and used properly. This has been tested and found to comply with the limits of a Class B computing device in accordance with the specifications in Part 15 of FCC Rules. These specifications are designed to provide reasonable protection against such interference in a residential installation. However, there is no guarantee that interference will not occur in a particular installation. If this device does cause harmful interference to radio or television reception, which can be determined by plugging the device in and out, the user can try to correct the interference by one or more of the following measures:

- Reorient or relocate the receiving antenna.
- Increase the separation between the device and receiver.
- Connect the computer into an outlet on a circuit different from that to which the receiver is connected.
- Consult the dealer or an experienced radio/TV technician for help. Consult the dealer or an experienced radio/TV technician for help.

10. Technical Support

If you encounter any technical problem, please contact us through:

Taiwan First Line Electronics Corp.

No. 40, Chung-Shan Road, Tu-Cheng Industrial Area, Taipei Hsian, Taiwan,
R.O.C.

Web site: www.bafo.com.tw

OR

Quality Computer Accessories Inc. NJ

70 Ethel Road West, Unit 1, Piscataway, NJ 08854, USA

Web site: www.bafo.com