



User's Manual
USB to 10/100 Base-TX
Ethernet Adapter



BF-310

CONTENT

1. Introduction	2
2. Package Content	2
3. Product Features	2
4. System Requirements	2
5. Connecting for USB to 10/100 Base-TX Ethernet adapter	3
6. Driver Installation	3
6.1 Windows [®] 98 Driver Installation	3
6.2 Windows [®] ME Driver Installation	6
6.3 Windows [®] 2000 Driver Installation	8
6.4 Windows [®] XP Driver Installation	11
7. FAQ	12
8. Disclaimer	12
9. FCC Statement	12
10. Technical Support	13

1. Introduction

The USB to 10/100 Base-TX Ethernet adapters performs good plug and play connection of PC peripherals “Out-side the box” and mark a significant advance in desktop cable management. Using the USB Ethernet 10/100 adapter you can simplify your PC network connections in the home, office and on the road.

The Universal Serial Bus was designed to replace the current serial, parallel and other port types used on a PC with a single universal interface. Many different types of devices can be attached to a single PC USB interface by using a USB Hub's.

2. Package Content

Hardware:

- USB Ethernet 10/100 adapter
- USB A-B cable

Software:

- Driver software CD
- User's Manual

3. Product Features

- USB specification 1.1 compliant
- IEEE 802.3 MII compliant
- Supports USB Suspend/Resume detection logic
- Full-Speed USB Device
- Supports wakeup frame, link status change and magic pocket wake-up.
- Supports automatically load vendor ID from EEPROM
- 18Kbytes SRAM build in

4. System Requirements

PC

- AMD or Intel Pentium 133MHz or better based computer
- Available USB port
- CD-ROM drive
- Windows[®] 98SE, Windows[®] ME, Windows[®] 2000, Windows[®] XP

5. Connecting for USB to 10/100 Base-TX Ethernet adapter

To connect the USB to 10/100 Base-TX Ethernet adapter to local network, please follow the below steps:

- 5.1 Prepare a straight-through twisted-pair cable, maximum length 100 meters
- 5.2 Use category 3, 4, 5 cables for connection to 10Mbps Ethernet
- 5.3 Use category 5 cable for connection to 100Mbps fast Ethernet
- 5.4 Connection one end of the cable to the RJ-45 port on the USB Ethernet 10/100 adapter
- 5.5 The other-end to any available station port on a network HUB or Switch
- 5.6 When inserting an RJ-45 plug, please make sure that the tab is on the plug clicks into position

6 Driver Installation

6.1 Windows[®] 98 Installation

- 6.1.1 Connect the USB port of **USB to 10/100 Ethernet adapter** to PC with USB cable.
- 6.1.2 The “**Add New Hardware Wizard**” dialog box will appears as below, click “**Next**” to continue.



- 6.1.3 Choose “**Search for the best driver for your device (Recommended)**” then click “**Next**”.



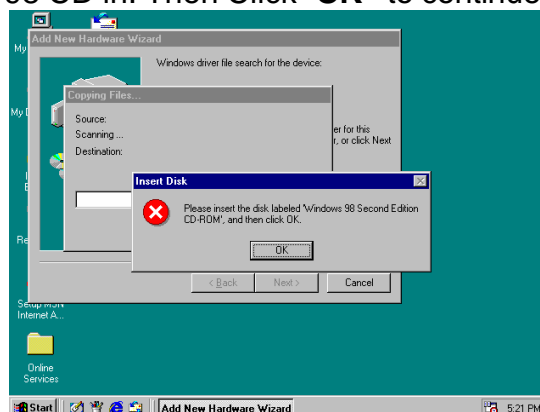
- 6.1.4 Select “**Specify a location**” and type **D:\DRIVER\BF-310WINDOWS** (D: represents CD-ROM) in the dialog box, then click “**Next**”



- 6.1.5 Windows[®] will search the driver for this device. Make sure the driver that Windows[®] found is “**D:\DRIVER\BF-310WINDOWS\BAFO.INF**” then click “**Next**”.



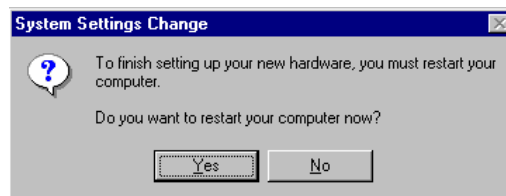
- 6.1.6 After Windows[®] finish copying “BAFO.INF”; it will pop-up a dialog box asking “Windows 98 Second Edition CD-ROM”. Take driver CD off and put Windows 98 CD in. Then Click “**OK**” to continue.



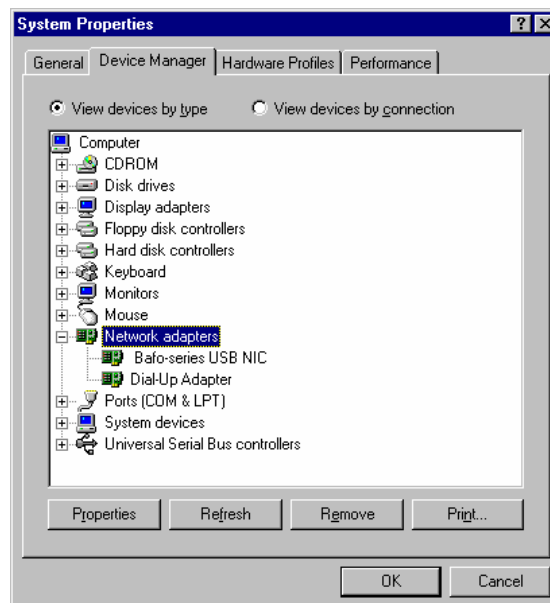
6.1.7 Click **“Finish”** to complete the installation of **“BAFO-series USB NIC”**



6.1.8 To finish setting up new hardware, click on **“Yes”** to restart your computer.



6.1.15 After Windows[®] installed the entire driver; you have to check **“My Computer”-“Control Panel”-“System”-“Device Manager”** to make sure the driver has already installed. In the **“Network adapters”** it will show **“BAFO-series USB NIC”**.



6.2 Windows[®] ME installation

- 6.2.1 Connect the USB port of **USB to 10/100 Ethernet adapter** to PC with USB cable.
- 6.2.2 The “**Add New Hardware Wizard**” dialog box will appear as below.
- 6.2.3 Choose “**Automatic search for a better driver (Recommended)**” and click on “**Next**” to continue.



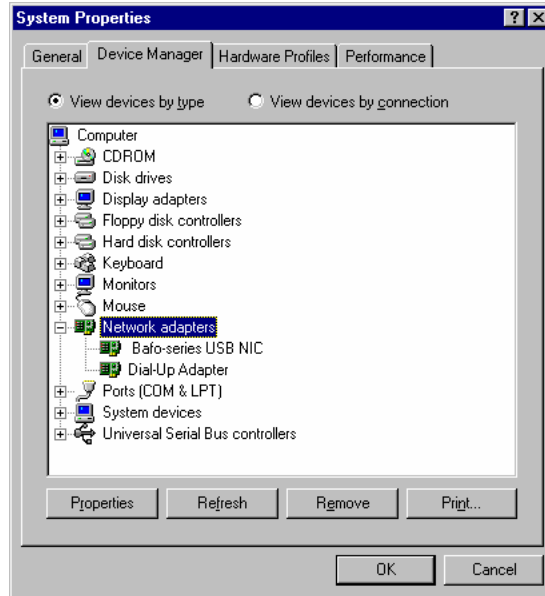
- 6.2.4 Click on “**Finish**” to end this installation.



- 6.2.5 Click on “**Yes**” to restart your computer.

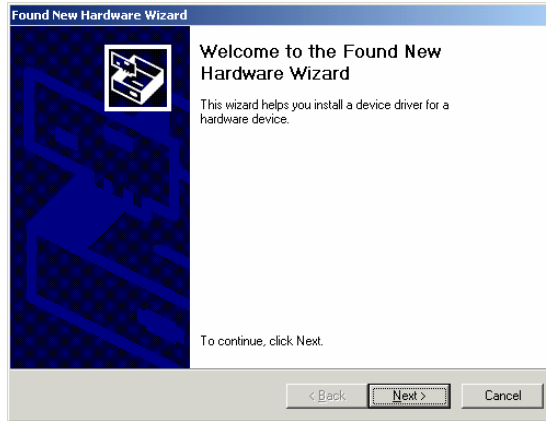


- 6.2.6 You should check “**My Computer**”-“**Control Panel**”-“**System**”-“**Device Manager**” to make sure the driver has already installed. Then, in the “**Network adapters**” it will show “**BAFO-series USB NIC**”.

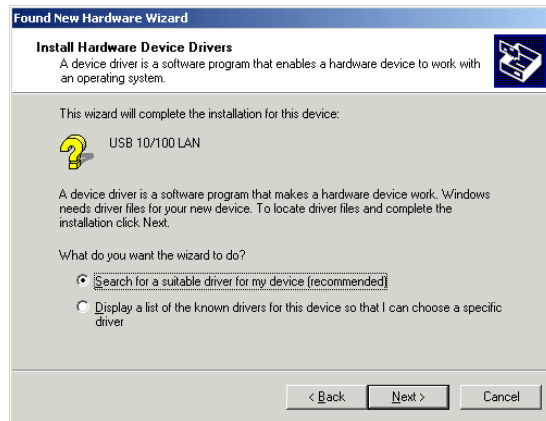


6.3 Windows[®] 2000 installation

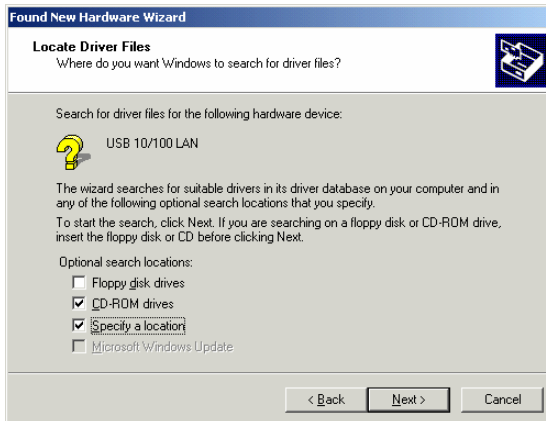
- 6.3.1 Connect the USB port of “**USB to 10/100 Ethernet adapter**” to PC with USB cable.
- 6.3.2 The “**Add New Hardware Wizard**” dialog box will appear as below.



- 6.3.3 Choose “**Search for a suitable driver for my device (Recommended)**” then click “**Next**”.



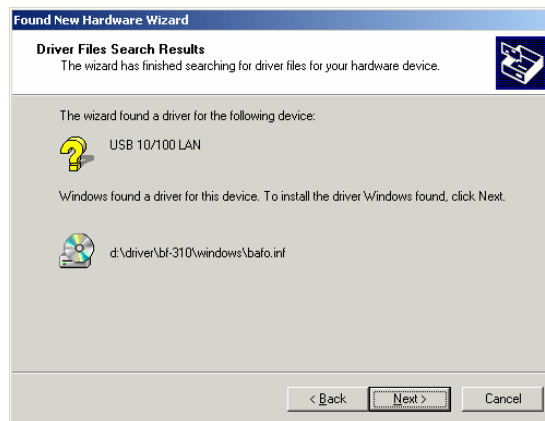
- 6.3.4 Choose “**CD-ROM drives**” and “**Specify a location**” then click on “**Next**” to continue.



6.3.5 Type **D:\DRIVER\BF-310\WINDOWS** (D: represents CD-ROM) in the dialog box, and then click **“OK”** to continue.



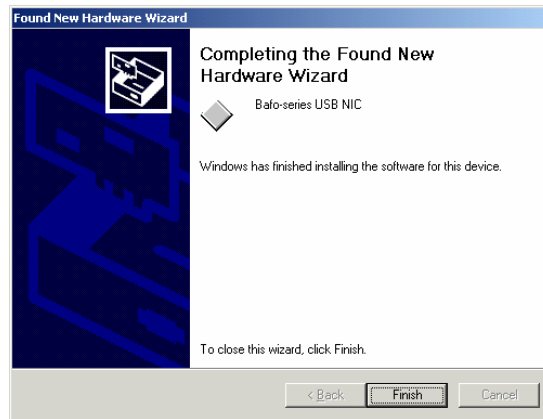
6.3.6 Windows[®] will search the driver for this device. Make sure the driver that Windows[®] find is **“d:\driver\bf-310\windows\bafo.inf”** then click **“next”** to continue.



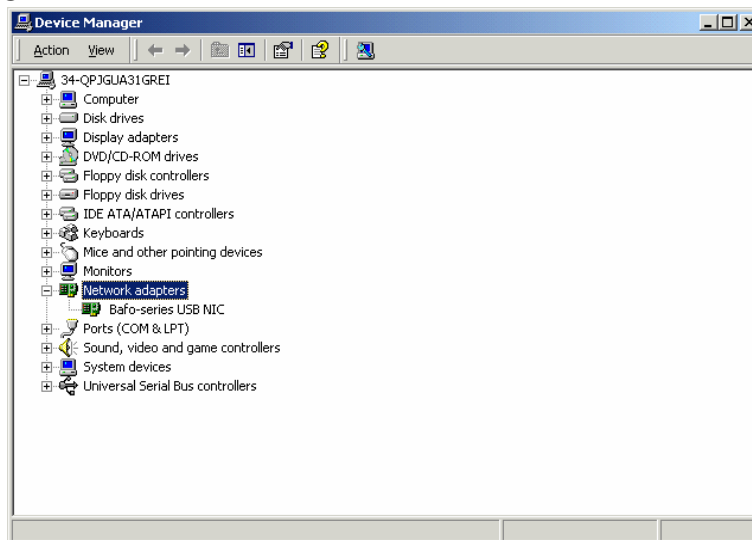
6.3.7 While Windows[®] install the driver, in the same time it will pop up a **“Digital Signature not found”** dialog box. Click **“Yes”** to continue.



6.3.8 Click **“Finish”** to end the installation of **“Bafo-series USB NIC”**.



- 6.3.9 Please check **“My Computer”-“Control Panel”-“System”-“Hardware”-“Device Manager”** to make sure the driver has already installed. Then, in the **“Network adapters”** it will show **“BAFO-series USB NIC”**.

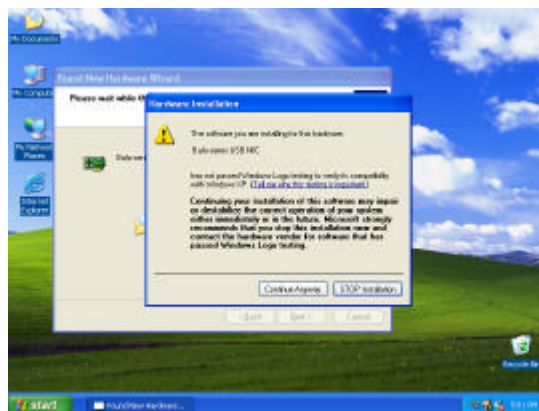


6.4 Windows[®] XP installation

- 6.4.1 Connect the USB port of **USB to 10/100 Ethernet adapter** to PC with USB cable.
- 6.4.2 The “**Add New Hardware Wizard**” dialog box will appear as below. Select “**Install the software automatically (Recommended)**” and then click on “**Next**” to continue.



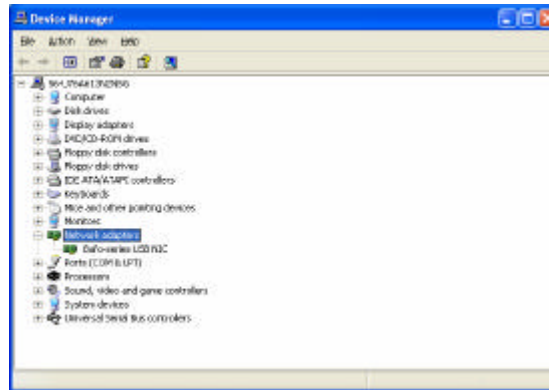
- 6.4.3 Windows[®] will show a warning message about “**software not pass Windows[®] logo**”, click on “**Continue anyway**” to continue.



- 6.4.4 Click on “**Finish**” to end this installation.



- 6.4.5 Please let Mouse point to **“My Computer”** click on right key **–“Properties”–“Hardware”–“Device Manager”** to make sure the driver has already installed.
- 6.4.6 Then, in the **“Network adapters”** it will show **“BAFO-series USB NIC”**.



7. FAQ

Q: When USB to 10/100 Ethernet adapter be plugged into PC USB Port, but “Add New Hardware Wizard” does not show up. What should I do?

A: Check if RJ-45 plug are well plugging into “USB to 10/100 Ethernet adapter” and network Hub or Switch.

8. Disclaimer

Information in this document is subject to change without notice. The manufacturer does not make any representations or warranties (implied or otherwise) regarding the accuracy and completeness of this document and shall in no event be liable for any loss of profit or any other commercial damage, including but not limited to special, incidental, consequential, or other damages.

No part of this document may be reproduced or transmitted in any form by any means, electronic or mechanical, including photocopying, recording or information recording and retrieval systems without the express written permission of the manufacturer.

All brand names and product names used in this document are trademarks, or registered trademarks of their respective holders.

9. FCC Statement

This device generates and uses radio frequency and may cause interference to radio and television reception if not installed and used properly. This has been tested and found to comply with the limits of a Class B computing device in accordance with the specifications in Part 15 of FCC Rules. These specifications are designed to provide reasonable protection against such interference in a residential installation. However, there is no guarantee that interference will not occur in a particular installation. If this device does cause harmful interference to radio or television reception, which can be determined by plugging the device in and out, the user can try to correct the interference by one or more of the following measures:

- Reorient or relocate the receiving antenna.
- Increase the separation between the device and receiver.
- Connect the computer into an outlet on a circuit different from that to which the receiver is connected.
- Consult the dealer or an experienced radio/TV technician for help. Consult the dealer or an experienced radio/TV technician for help.

10. Technical Support

If you encounter any technical problem, please contact us through:

Taiwan First Line Electronics Corp.

**No. 40, Chung-Shan Road, Tu-Cheng Industrial Area, Taipei Hsian,
Taiwan, R.O.C.**

Web site: www.bafo.com.tw

OR

Quality Computer Accessories Inc. NJ

70 Ethel Road West, Unit 1, Piscataway, NJ 08854, USA

Web site: www.bafo.com