



# User's Manual

## USB 2.0 to Ethernet Adapter



**BF-320**

## CONTENTS

<b>1. Introduction</b>	<b>2</b>
<b>2. Package Content</b>	<b>2</b>
<b>3. Product Features</b>	<b>2</b>
<b>4. System Requirements</b>	<b>3</b>
<b>5. Part Name and Functions</b>	<b>3</b>
<b>6. Driver Installation</b>	
6.1 Windows <sup>®</sup> 98 installation	3
6.2 Windows <sup>®</sup> ME installation	6
6.3 Windows <sup>®</sup> 2000 installation	8
6.4 Windows <sup>®</sup> XP installation	11
<b>7. FAQ</b>	<b>13</b>
<b>8. Disclaimer</b>	<b>13</b>
<b>9. FCC Statement</b>	<b>14</b>
<b>10. Technical Support</b>	<b>14</b>

## 1. Introduction

This **USB2.0 to Ethernet Adapter** provides an easy way to carry and flexible interface solution.

Using the USB Ethernet 10/100 adapter you can simplify your PC network connections in the home, office and on the road

This device supports Universal Serial Bus specification 2.0 which will let the data transfer rate faster than current USB 1.1 specification.

## 2. Package Content

Hardware:

- USB2.0 to Ethernet Adapter
- USB A-B cable

Software:

- Driver software
- User' s Manual

## 3. Product Features

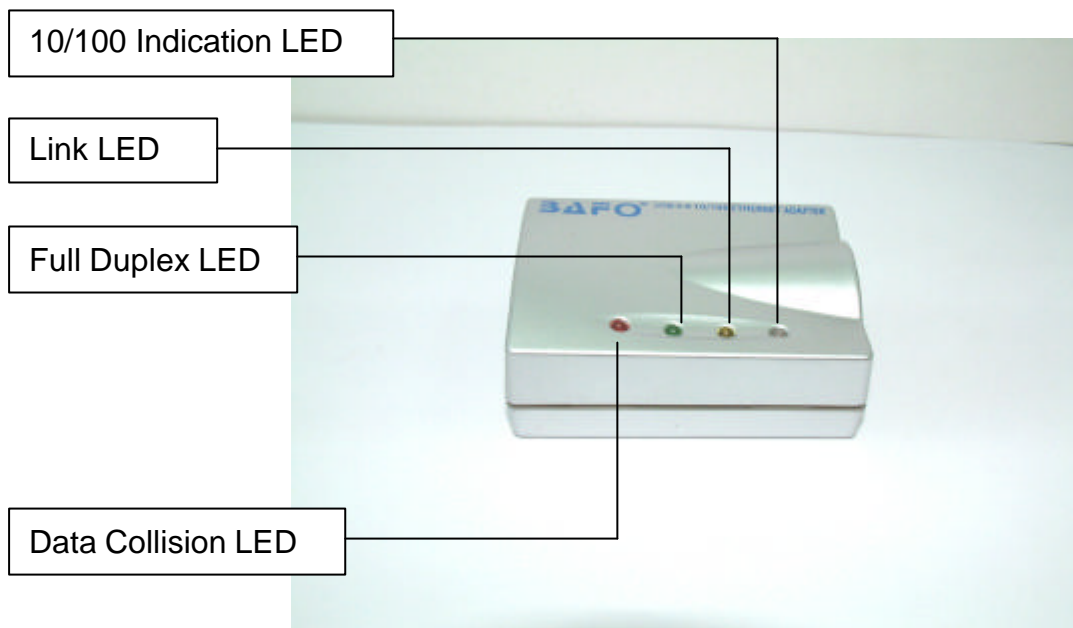
- USB specification revision 1.0, 1.1 and 2.0 compliant
- Full/High speed USB device with bus power capability
- Support 4 endpoints on USB
- IEEE802.3u 100BASE-T, TX and T4 Compatible
- Support both full-duplex and half-duplex operation on Fast Ethernet
- Supports suspended mode and remote wakeup
- Optional PHY power down mode for power saving
- Support automatic loading of Ethernet ID, USB Descriptors and Adapter Configuration from EEPROM on power-on initialization

## 4. System Requirements

PC

- IBM PC 486DX4-100 MHz or higher or compatible system
- Available USB port
- CD-ROM drive
- Windows<sup>®</sup> 98SE, Windows<sup>®</sup> ME, Windows<sup>®</sup> 2000, Windows<sup>®</sup> XP

## 5. LED indicators



## 6. Driver Installation

### 6.1 Windows<sup>®</sup> 98 Installation

6.1.1 Connect the USB port of **USB2.0 to Ethernet Adapter** to USB port of PC with a USB cable.

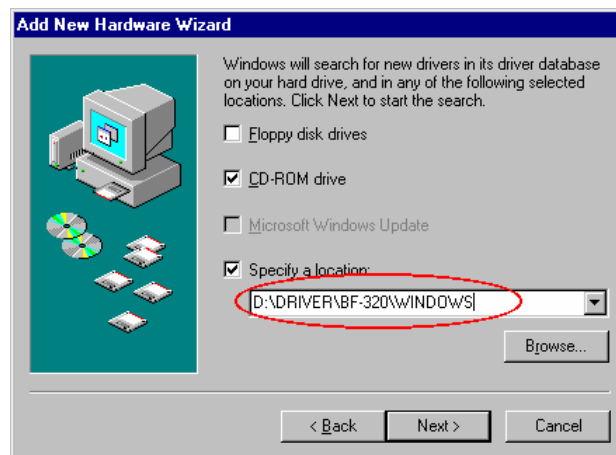
6.1.2 The “**Add New Hardware Wizard**” dialog box appears as below, click on “**Next**” to continue.



6.1.3 Chose “**Search for the best driver for your device (Recommended)**” then click “**Next**”



6.1.4 Select “**Specify a location**” and type **D:\DRIVER\BF-320\WINDOWS** (D: represents CD-ROM) in the dialog box, then click “**Next**”



6.1.5 Windows<sup>®</sup> will search the driver for this device. Make sure the driver that Windows<sup>®</sup> found is “**D:\DRIVER\BF-320\WINDOWS\AX88172.INF**” , then click “**Next**”.



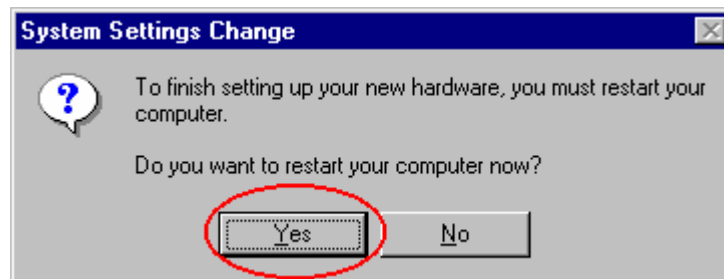
6.1.6 Windows<sup>®</sup> will ask for “Windows 98 Second Edition CD-ROM” , click “**OK**” to continue.



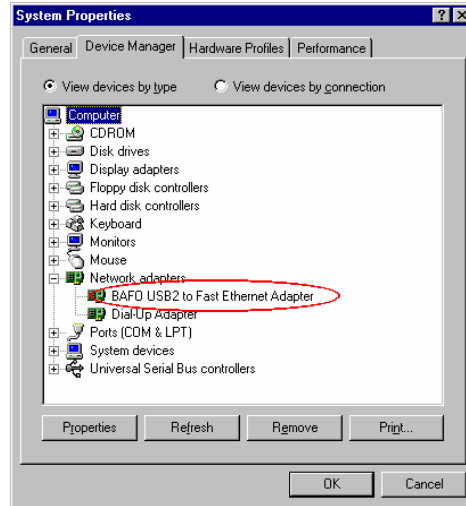
6.1.7 Click **“Finish”** to complete the setup procedure of **“BAFO USB2 to Fast Ethernet Adapter”**.



6.1.8 A dialog box will appear and asking for whether restart computer, click **“Yes”** to continue.

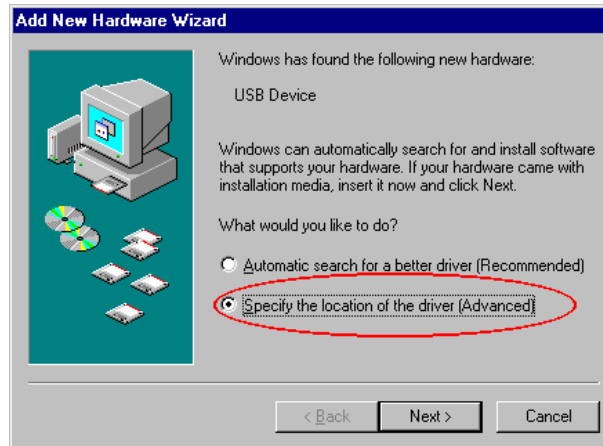


6.1.9 After Windows<sup>®</sup> installed all the driver, you have to check **“My Computer”-“Control Panel”-“System”-“Device Manager”** to make sure the driver has already installed , in the **“Network adapter”** it will show a **“BAFO USB2 to Fast Ethernet Adapter”** .



## 6.2 Windows<sup>®</sup> ME installation

6.2.1 Connect the USB port of **USB2.0 to Ethernet Adapter** PC's USB port via USB cable. Then "**Add New Hardware Wizard**" dialog box will appear as below, click on "**Specify the location of the driver (Advanced)**" then click on "**Next**" to install the driver. (In this procedure, you have to put the driver CD into your CD-ROM).



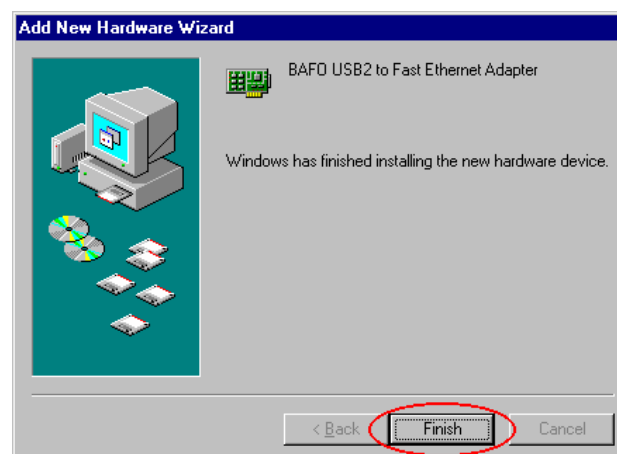
6.2.2 Choose "**Search for the best driver for your device.(Recommended)**" and Select "**Specify a location**" and type **D:\DRIVER\BF-320WINDOWS** (D: represents CD-ROM) in the dialog box, then click "**NEXT**".



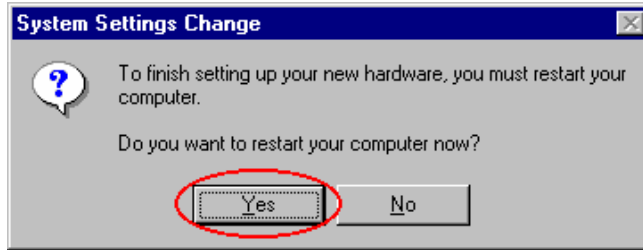
6.2.3 Windows<sup>®</sup> will search the driver for this device, make sure the driver that Windows<sup>®</sup> found is “D:\DRIVER\BF-320\WINDOWS\AX88172.INF” then click “Next”



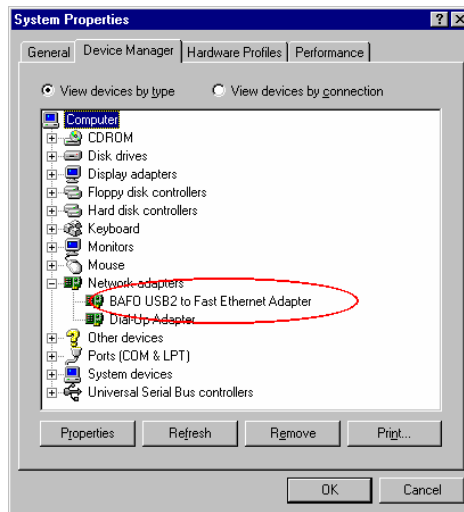
6.2.4 Click “Finish” to finish installing “BAFO USB2 to Fast Ethernet Adapter” driver.



6.2.5 A dialog box will appear and asking for whether restart computer, click “Yes” to continue.



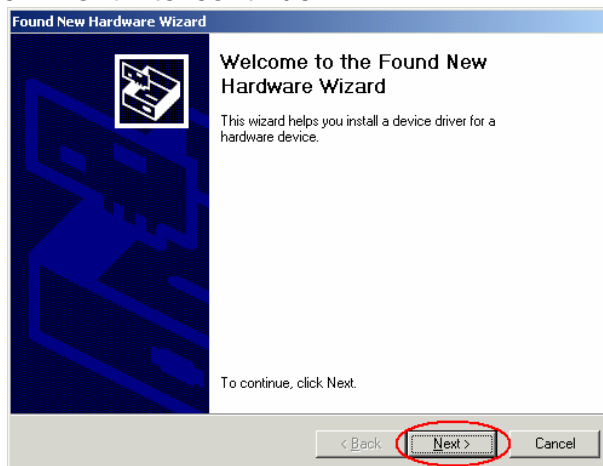
6.2.6 After Windows<sup>®</sup> installed all the driver, you have to check the “**System**”-”**Device Manager**” and make sure the driver has already installed , in the “**Network adapters**” it will show a “**BAFO USB2 to Fast Ethernet Adapter**”



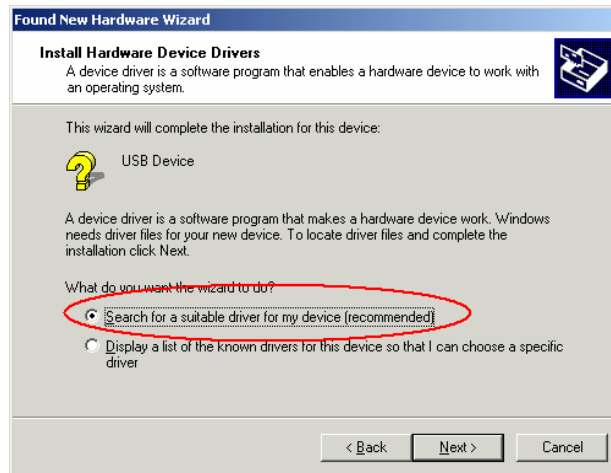
### 6.3 Windows<sup>®</sup> 2000 installation

6.3.1 Connect USB port of **USB2.0 to Ethernet Adapter** to USB port of PC with a USB cable.

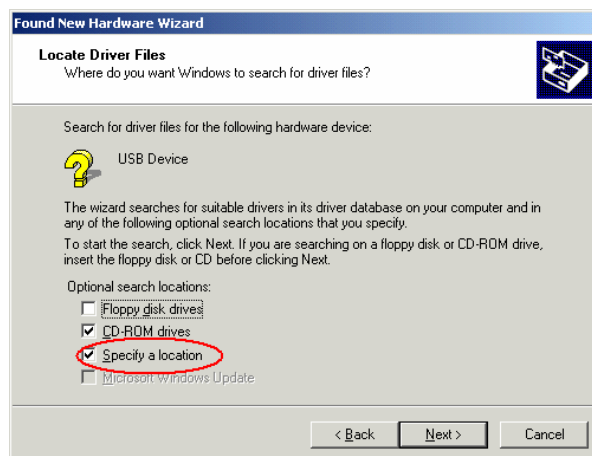
6.3.2 The “**Welcome to the Found New Hardware Wizard**” dialog box appears as below. Click “**Next**” to continue.



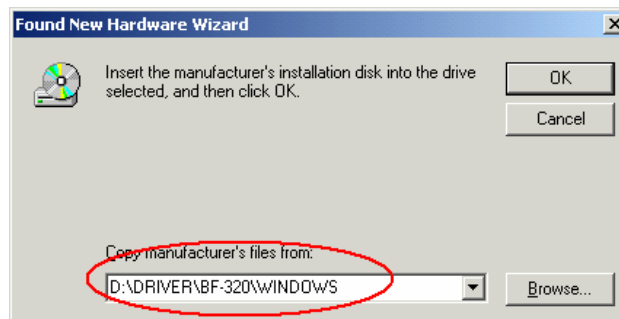
6.3.3 The wizard starts to install device. Chose “**Search for a suitable driver for my device (recommended)**” then click “**Next**”.



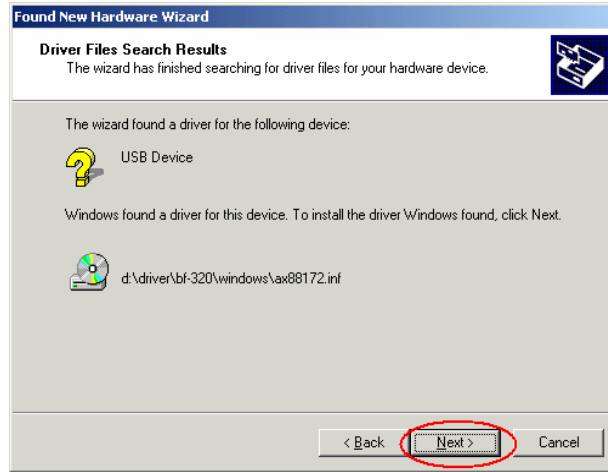
6.3.4 Locate the driver files, select “**CD-ROM Drivers**” and “**Specify a location**”. Click “**Next**” to continue.



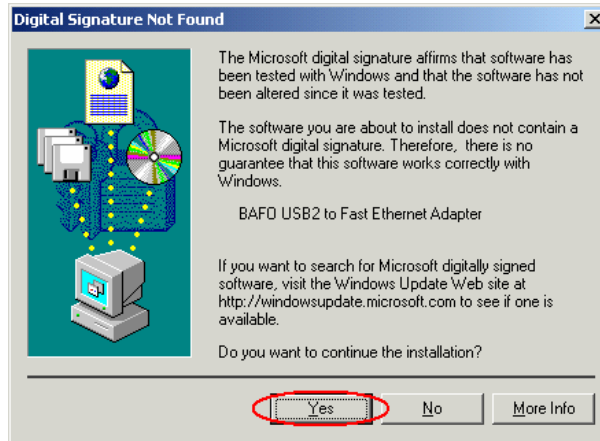
6.3.5 Locate detail driver files, type “**D:\DRIVER\BF-320\WINDOWS**” at dialog box. Click “**OK**” to continue.



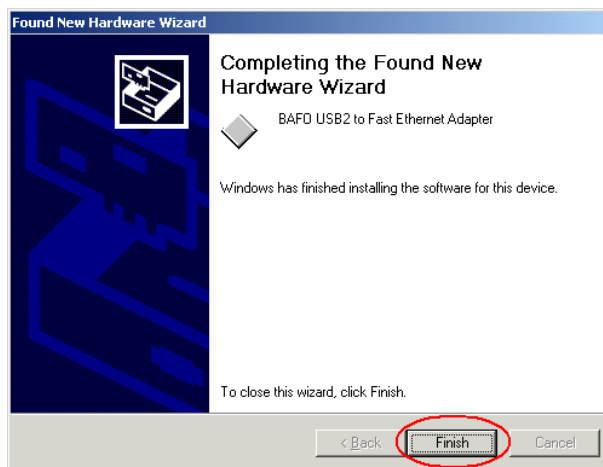
6.3.6 Wizard search for drivers for device. Make sure the device driver that Windows<sup>®</sup> found is “**d:\driver\bf-320\windowslax88172.inf**” to continue.



6.3.7 When device search for driver, it will pop up a dialog box about “**Digital Signature Not Found**” and asking whether continue to installation. Click “**Yes**” to continue.

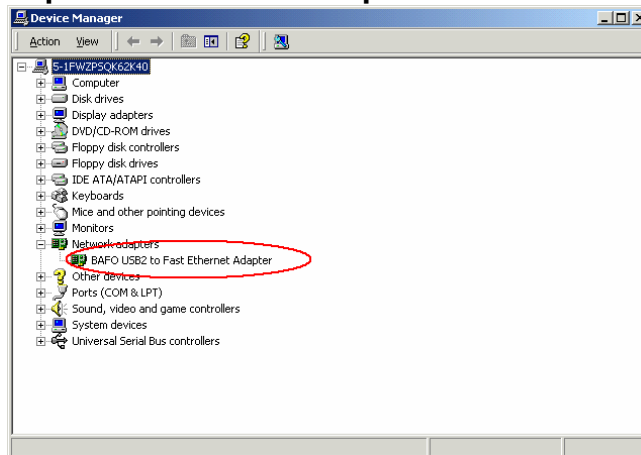


6.3.8 Click on “**Finish**” to finish installation of “**BAFO USB2 to Fast Ethernet Adapter**”.



6.3.9 Click on “**Control Panel**”, “**System**”, “**Hardware**”, “**Device manager**” to check whether device be well installed. There should have “**BAFO USB2 to Fast**

**Ethernet Adapter” at “Network adapter”.**



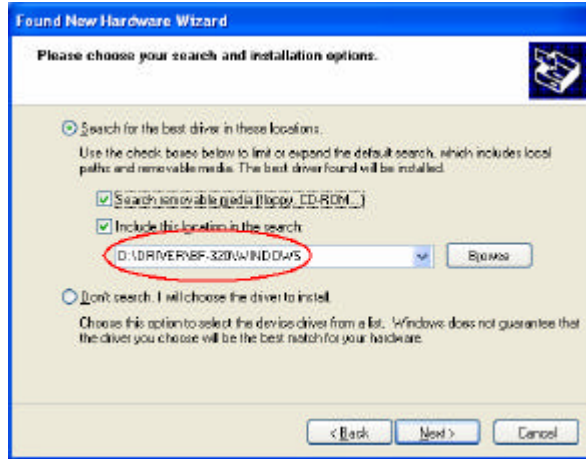
**6.4 Windows<sup>®</sup> XP installation**

6.4.1 Connect USB port of **USB2.0 to Ethernet Adapter** to USB port of PC with a USB cable.

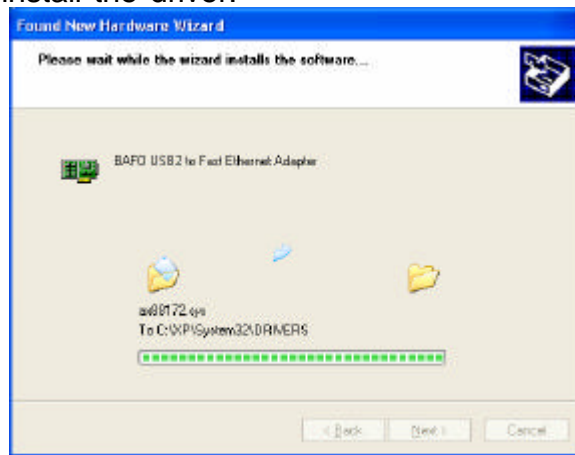
6.4.2 The **“Welcome to the Found New Hardware Wizard”** dialog box appears as below. Select **“Install from a list or specific location (Advanced)”**, and then click **“Next”**.



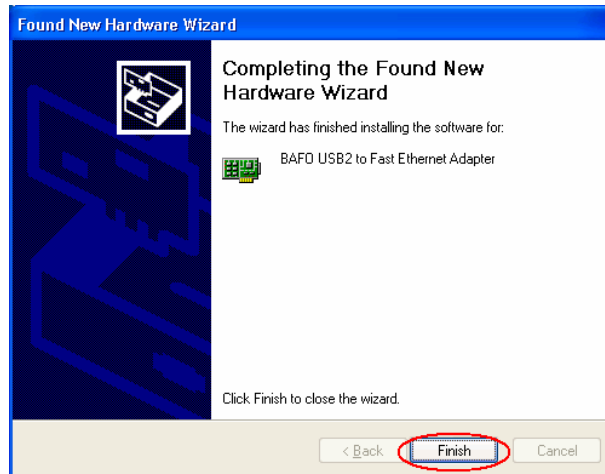
6.4.3 Insert installation CD at CD-ROM, Select **“Search for the best driver in these locations”** and enable **“Search removable media”**, **“Include this location in the search”**. Locate detail driver files, type **“D:\DRIVER\BF-320\WINDOWS”** at dialog box and then click **“Next”** to continue.



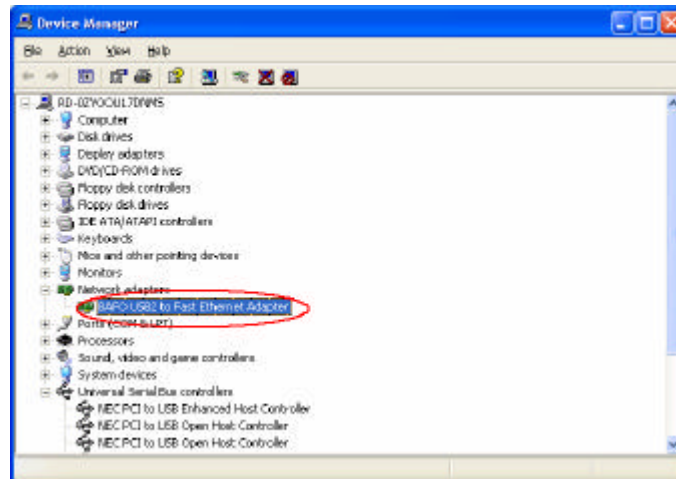
6.4.4 Wizard will install the driver.



6.4.5 Click on “**Finish**” to finish installing the “**BAFO USB2 to Fast Ethernet adapter**”.



6.4.6 Click on “**Control Panel**”, “**System**”, “**Hardware**”, “**Device manager**” to check whether device be well installed. There should have “**BAFO USB2 to Fast Ethernet Adapter**” at “**Network adapter**”.



## 7 FAQ

- 7.1 Q: The “Found New Hardware Wizard” dialog box does not show up.  
A: Make sure USB plug be inserted into “USB2.0 to Ethernet Adapter’ s” USB connector properly.
- 7.2 Q: What is the meaning of four indicators ?  
A: i). Red Color indicator: When collision happen, it will turn on.  
ii). Green Color indicator: When data transmit is full duplex, it will turn on.  
iii). Yellow Color indicator: When this “USB2.0 to Ethernet Adapter” link with network, it will turn on.  
iv). Dual Color indicator: When this “USB2.0 to Ethernet Adapter” operate at 100Mbps then it will light at Orange color. On the contrary, when it operate at 10Mbps then it will light at Green color.
- 7.3 Q: The network which I have connected is 100Mbps, but the LED show it operate at 10Mbps ?  
A: Please check two issues.  
i). Make USB Port of PC is USB2.0 spec.  
ii). If USB port provided by USB2.0 PCI Card then please make sure this card really installed at USB2.0.

## 8 Disclaimer

Information in this document is subject to change without notice. The manufacturer does not make any representations or warranties (implied or otherwise) regarding the accuracy and completeness of this document and shall in no event be liable for any loss of profit or any other commercial damage, including but not limited to special, incidental, consequential, or other damages.

No part of this document may be reproduced or transmitted in any form by any means, electronic or mechanical, including photocopying, recording or information recording and retrieval systems without the express written permission of the manufacturer.

All brand names and product names used in this document are trademarks, or registered trademarks of their respective holders.

## 9 FCC Statement

This device generates and uses radio frequency and may cause interference to radio and television reception if not installed and used properly. This has been tested and found to comply with the limits of a Class B computing device in accordance with the specifications in Part 15 of FCC Rules. These specifications are designed to provide reasonable protection against such interference in a residential installation. However, there is no guarantee that interference will not occur in a particular installation. If this device does cause harmful interference to radio or television reception, which can be determined by plugging the device in and out, the user can try to correct the interference by one or more of the following measures:

- Reorient or relocate the receiving antenna.
- Increase the separation between the device and receiver.
- Connect the computer into an outlet on a circuit different from that to which the receiver is connected.
- Consult the dealer or an experienced radio/TV technician for help. Consult the dealer or an experienced radio/TV technician for help.

## 10 Technical Support

**If you encounter any technical problem, please contact us through:**

**Taiwan First Line Electronics Corp.**

**No. 40, Chung-Shan Road, Tu-Cheng Industrial Area, Taipei Hsian,  
Taiwan, R.O.C.**

**Web site: [www.bafo.com.tw](http://www.bafo.com.tw)**

**OR**

**Quality Computer Accessories Inc. NJ**

**70 Ethel Road West, Unit 1, Piscataway, NJ 08854, USA**

**Web site: [www.bafo.com](http://www.bafo.com)**