



USER'S MANUAL
USB 2.0 PCI Card



BF-460

1. Introduction

BF-460 is a PCI card fully functional of USB 2.0 Host, which supports High-Speed, Full-Speed, & Low-Speed operation and follows the Enhanced Host Controller Interface (EHCI) specification.

2. Package Content

- Hardware: USB 2.0 PCI Card
- Software: Driver software in CD-ROM
- User's Manual

3. Product Features

- USB specification revision 2.0 compliant
- Data transfer rate up to 480Mbps
- Support up to 127 USB devices
- Fully compatible with USB 1.1 devices
- OHCI specification for USB 1.1 compliant
- Five downstream ports (4 external ports and one internal port) support High-speed (480Mbps), Full-speed (12Mbps) or Low-speed (1.5Mbps)
- 32-bit 33MHz host interface, PCI specification revision 2.2 compliant
- PCI-Bus power management interface specification revision 2.1 compliant
- Support hot swap and wake-up

4. System Requirements

PC

- IBM PC Pentium II 266MHz CPU or higher or compatible system
- Available PCI slot
- CD-ROM drive
- Windows[®] 98/98SE, Windows[®] ME, Windows[®] 2000, Windows[®] XP

5. Hardware Installation

5.1 Turn off your computer, unplug the power cord, disconnect all peripheral devices and remove the PC case.

5.2 Locate the PCI slots on the motherboard; remove any add-on card, which blocks easy access to the PCI slots.

5.3 Take the USB 2.0 PCI card out of its anti-static bag and push it into the first empty PCI slot.

Note: There is only one way that your USB 2.0 PCI card can fit the slot correctly.

5.4 Re-install any add-on card that removed, re-connect all peripheral devices, assembly the PC case and plug the power cord.

6. Software Installation (Windows® 98, ME as example)

6.1 Windows® 98 Driver Installation

- 6.1.1 Power on the computer, Windows® will detect an unknown device and run the “**Add New Hardware Wizard**” to assist you in setting up the new device.



- 6.1.2 Insert the driver of **USB 2.0 PCI card** into **CD-ROM drive**, click “**Next**” to continue.

- 6.1.3 Select “**Search for the best driver for your device**” and click “**Next**”



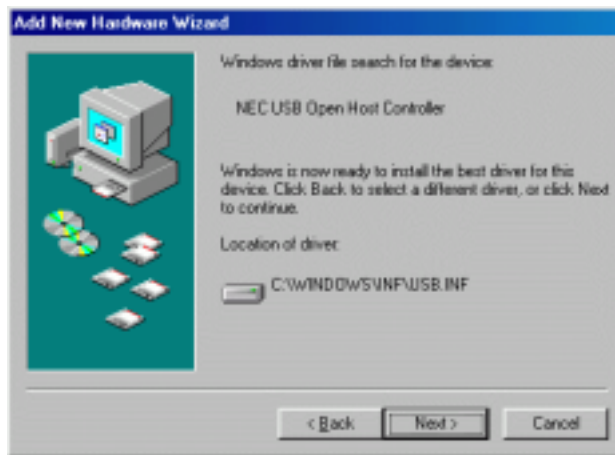
- 6.1.4 When the Windows® appears as below, click “**NEXT**” to continue.



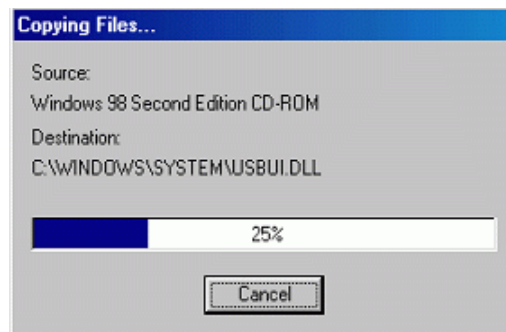
6.1.5 Select **the updated driver (Recommended)**, and then click **“NEXT”** to continue.



6.1.6 Windows® will detect the suitable driver; click **“NEXT”** to continue.



6.1.7 Windows® will install the driver to your system.





6.1.8 When the Windows[®] appears as step 6.1, repeat the steps 6.1.1 to 6.1.7.

6.1.9 When the Windows[®] appears as below, click “**NEXT**” to continue.



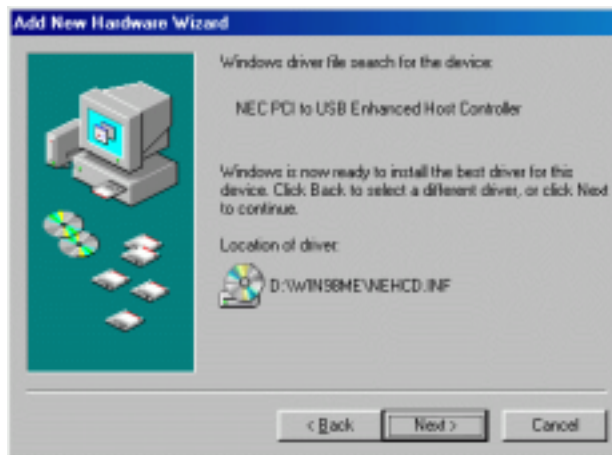
6.1.10 Select “**Search for the best driver for your device**” and click “**Next**”



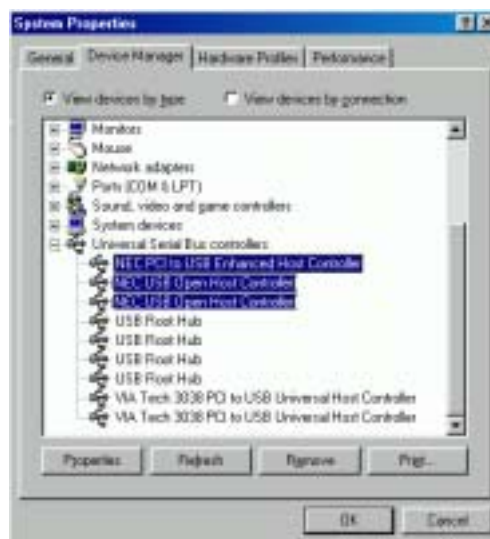
6.1.11 Select Specify a Location and browse the driver’s location
“D:\Win98ME” in the dialog (**D:** represents the CD-ROM Drive),
then click “**NEXT**” to continue.



6.1.12 When the Windows® appears as below, click “**NEXT**” to continue.



6.1.13 After installation is complete, you have to check “**My Computer**”-
“**Control Panel**”-“**System**”-“**Device Manager**” and you can see a
“**NEC PCI to USB Enhanced Controller**”, “**NEC USB Open Host
Controller**”, “**NEC USB Open Host
Controller**” under the **Universal Serial Bus Controller**.



6.2 Windows® 2000 Driver Installation

- 6.2.1 Power on the computer, Windows® will detect an unknown device and run the “**Add New Hardware Wizard**” to assist you in setting up the new device.
- 6.2.2 Insert the driver of **USB 2.0 PCI card** into **CD-ROM drive**, click “**Next**” to continue.



- 6.2.3 Select **Search for a suitable driver for my device (recommended)**, and then click “**NEXT**”.



- 6.2.4 Select **Specify a location** and click “**NEXT**”.



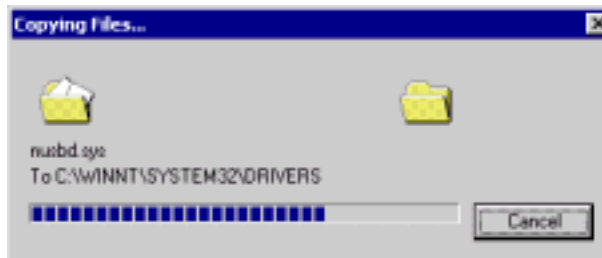
6.2.5 Browse the driver's location "d:\win2kxp\nehcd.inf" in the dialog (**D:** represents the CD-ROM Drive), and then click "OK"



6.2.6 Click "NEXT" to continue.



6.2.7 Windows® will install the driver to your system.



6.2.8 Click "Finish" to complete the setup procedure.



- 6.2.9 After install the driver, you have to check the **“Control Panel”-“System”-“Hardware”-“Device manager”** to make sure that the driver has already installed properly. In the **Universal Serial Bus controller** you can see the **NEC PCI to USB Enhanced Controller** and **NEC PCI to USB Host Controller**



6.3 Windows® XP Driver Installation

- 6.3.1 Power on the computer, Windows® will detect an unknown device and run the “**Add New Hardware Wizard**” to assist you in setting up the new device.
- 6.3.2 Insert the driver of **USB 2.0 PCI card** into **CD-ROM drive**, click “**Next**” to continue.
- 6.3.3 Select **Install the software automatically (Recommended)** then click “**NEXT**”.



- 6.3.4 Windows® will auto search the suitable driver and showing as below, please choose the “**d:\win2kxp\nehcd.inf**”, then click “**NEXT**” to continue.



- 6.3.5 As the Windows® appears as below; please click “**Continue Anyway**” to continue the installation step.



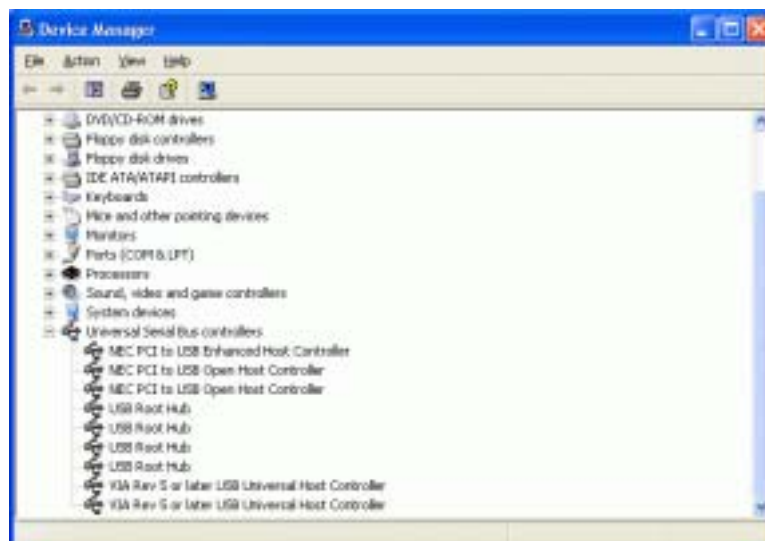
6.3.6 Windows® will install the driver to your system.



6.3.7 Click **“Finish”** to finish the setup procedure.



6.3.8 After finished install the driver, you should go to the **“Control Panel”-“System”-“Hardware”-“Device manager”** to check the **Universal Serial BUS controller**, you can see the **NEC PCI to USB Enhanced Host Controller** and **NEC PCI to USB Open Host Controller**.



7. FCC Statement

This device generates and uses radio frequency and may cause interference to radio and television reception if not installed and used properly. This has been tested and found to comply with the limits of a Class B computing device in accordance with the specifications in Part 15 of FCC Rules. These specifications are designed to provide reasonable protection against such interference in a residential installation. However, there is no guarantee that interference will not occur in a particular installation. If this device does cause harmful interference to radio or television reception, which can be determined by plugging the device in and out, the user can try to correct the interference by one or more of the followings:

- Reorient or relocate the receiving antenna.
- Increase the separation between the device and receiver.
- Connect the computer into an outlet on a circuit different from that to which the receiver is connected.
- Consult the dealer or an experienced radio/TV technician for help.

8. Technical Support

If you encounter any technical problem, please contact us through:

Taiwan First Line Electronics Corp.

**No. 40, Chung-Shan Road, Tu-Cheng Industrial Area, Taipei Hsian,
Taiwan, R.O.C.**

Web site: www.bafo.com.tw

OR

Quality Computer Accessories Inc. NJ

70 Ethel Road West, Unit 1, Piscataway, NJ 08854, USA

Web site: www.bafo.com