



USER'S MANUAL

4 PORT USB MINI HUB



BF-500A

1. Introduction

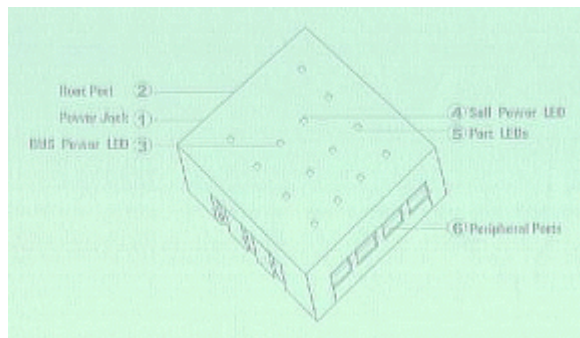
Congratulations on your purchase of the 4-port USB Mini hub. This hub allows you to attach your computer and USB devices such as Digital Camera, Scanner, Mouse, Keyboard, etc. through USB port. It will then make your work more efficient and more flexible.

2. Package Content

Hardware: 4-port USB hub, AC/DC adapter, 6 feet USB A to B type Cable
User' s Manual

3. Product Features

- USB specification revision 1.1 compliant
- Supports up to 127 USB devices
- Two power modes: Self-powered mode & Bus-powered mode
- Protection against current overload for every port
- Support full-speed 12Mbps and low-speed 1.5Mbps operation
- Warning LED indicator for fault or dummy USB port status
- Gold Plated contact provides maximum connectivity and prevent data loss Fully compatible with all USB devices product Function



4. System Requirements

PC

- IBM PC 486DX4-100 MHz or higher or compatible system
- Available USB port
- CD-ROM drive
- Windows[®] 95 OSR2.1, Windows[®] 98, Windows[®] ME, Windows[®] 2000

MAC

- Power G3, G4, or I-Mac
- Available USB port
- CD-ROM drive
- Mac OS 8.6 or higher

5. Hardware Installation

There are two modes (Bus-powered mode and Self-power mode) for install USB hub.

5.1 Bus-powered Mode: following steps to install the USB hub:

5.2 Power on your computer and take A to B USB cable.

5.3 Plug B type connector into the USB hub, and then plug A type connector into USB host (PC or Mac).

5.4 Connect low power USB devices (such as mouse, keyboard) to the USB hub; the USB devices will be detected by the system.

5.5 If USB host cannot find attached USB devices, skip to “Self power Mode” section below, then number 4 to continue.

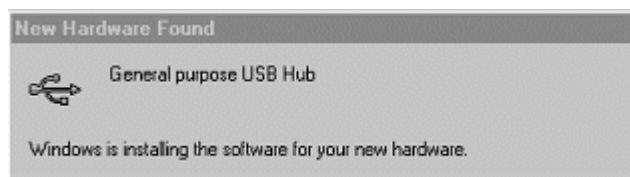
5.6 Self-power Mode: following steps to install the USB hub:

5.7 Power on your computer and take A to B USB cable.

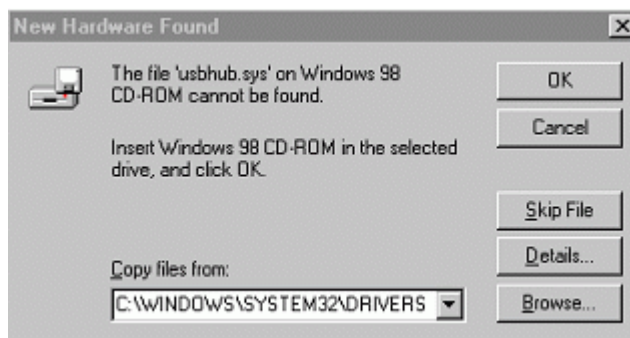
5.8 Plug AC/DC power supply to the outlet of USB hub, plug B type connector into the USB hub, then plug A type connector into USB host (PC or Mac)

5.9 Connect all USB devices (such as digital camera, scanner, mouse, keyboard, etc.) to the USB hub; the USB devices will be detected by the system.

5.10 If USB host cannot find attached USB devices, you need to use “Add new hardware Wizard” to add the USB hub to your system.



5.11 Follow the instruction on screen to step by step install the hardware to your system.



6. Troubleshooting

In case following symptoms you encountered when you use this USB hub, please check yourself before you call technical support.

6.1 All LEDs do not light up

6.2 Check power if it connects

6.3 Confirm USB cable has connected to the PC (or Mac)

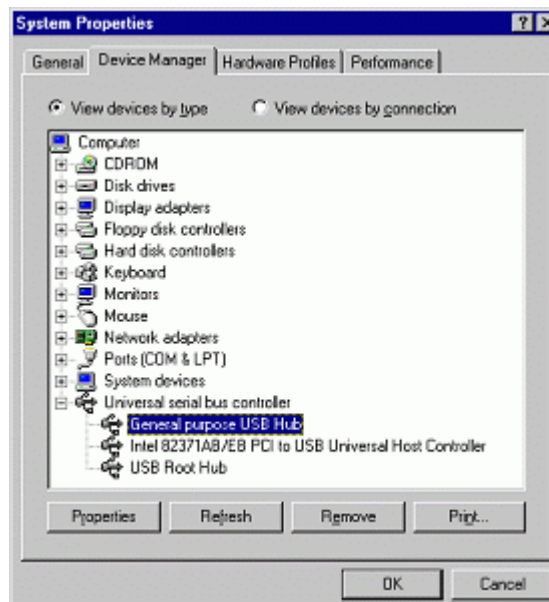
6.4 LED of single port does not light up

6.5 Check USB device has connected

6.6 Disconnect, then re-connect the USB device again

6.7 Disconnect, then re-connect the USB hub to the PC (or Mac)

6.8 Reboot your PC (or Mac)



7. Disclaimer

Information in this document is subject to change without notice. The manufacturer does not make any representations or warranties (implied or otherwise) regarding the accuracy and completeness of this document and shall in no event be liable for any loss of profit or any other commercial damage, including but not limited to special, incidental, consequential, or other damages.

No part of this document may be reproduced or transmitted in any form by any means, electronic or mechanical, including photocopying, recording or information recording and retrieval systems without the express written permission of the manufacturer.

All brand names and product names used in this document are trademarks, or registered trademarks of their respective holders.

8. FCC Statement

This device generates and uses radio frequency and may cause interference to radio and television reception if not installed and used properly. This has been tested and found to comply with the limits of a Class B computing device in accordance with the specifications in Part 15 of FCC Rules. These specifications are designed to provide reasonable protection against such interference in a residential installation. However, there is no guarantee that interference will not occur in a particular installation. If this device does cause harmful interference to radio or television reception, which can be determined by plugging the device in and out, the user can try to correct the interference by one or more of the following measures:

- Reorient or relocate the receiving antenna.
- Increase the separation between the device and receiver.
- Connect the computer into an outlet on a circuit different from that to which the receiver is connected.
- Consult the dealer or an experienced radio/TV technician for help.

9. Technical Support

If you encounter any technical problem, please contact us through:

Taiwan First Line Electronics Corp.

**No. 40, Chung-Shan Road, Tu-Cheng Industrial Area, Taipei Hsian,
Taiwan, R.O.C.**

Web site: www.bafo.com.tw

OR

Quality Computer Accessories Inc. NJ

70 Ethel Road West, Unit 1, Piscataway, NJ 08854, USA

Web site: www.bafo.com