



User's Manual  
USB2.0/Combo 2.5" HDD Enclosure



BF-6200/6210

## CONTENT

1. Introduction-----	2
2. Package Content-----	2
3. Product Features-----	2
4. System Requirements-----	2
5. Part name and functions-----	3
6. Hard Disk Installation-----	4
7. Driver Installation-----	5
7.1 Windows <sup>®</sup> 98 USB Driver Installation-----	5
7.2 Windows <sup>®</sup> 98 Driver Un-Installation-----	8
7.3 Troubleshooting-----	9
7.4 Windows <sup>®</sup> ME USB Driver Installation-----	10
7.5 Troubleshooting-----	11
7.6 Windows <sup>®</sup> 2000 USB Driver Installation-----	12
7.7 Troubleshooting-----	13
7.8 Windows <sup>®</sup> XP USB Driver Installation-----	14
7.9 Troubleshooting-----	15
7.10 MAC OS 9 Driver Installation-----	16
7.11 MAC OS X Driver Installation-----	17
7.12 IEEE1394 Driver Installation-----	18
8. FAQ-----	18
9. Disclaimer-----	19
10. FCC Statement-----	20
11. Technical Support-----	20

## 1. Introduction

This **USB2.0/Combo 2.5" HDD Enclosure** provides an easy to carry and flexible interface solution.

The device supports both USB 2.0 standard and IEEE1394a compliance interface, which enables people to easily connect to Desktop PC or Notebook without opening cover.

## 2. Package Conte

Hardware:

- USB2.0/Combo 2.5" HDD Enclosure
- Power adapter (DC-5V)
- USB A-B cable
- IEEE1394 6 pin to 4 pin cable
- Carry Bag

Software:

- Driver software

## 3. Product Features

- USB specification revision 2.0 compliant
- IEEE1394a compliance
- Dual mode to contain both 2.5" HDD
- Portable 2.5" hard disk, easy way to backup files
- Support ATAPI-4 compatible 2.5" hard disk

## 4. System Requirements

### PC

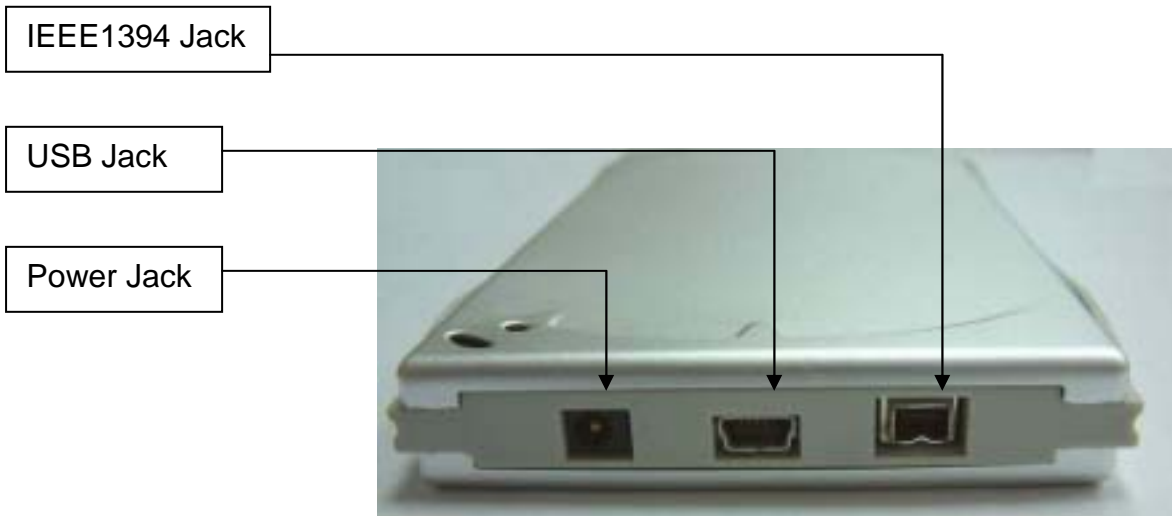
- IBM PC 486DX4-100 MHz or higher or compatible system
- Available USB port or IEEE1394 6pin or 4pin port
- CD-ROM drive
- Windows® 98SE, Windows® ME, Windows® 2000, Windows® XP

### MAC

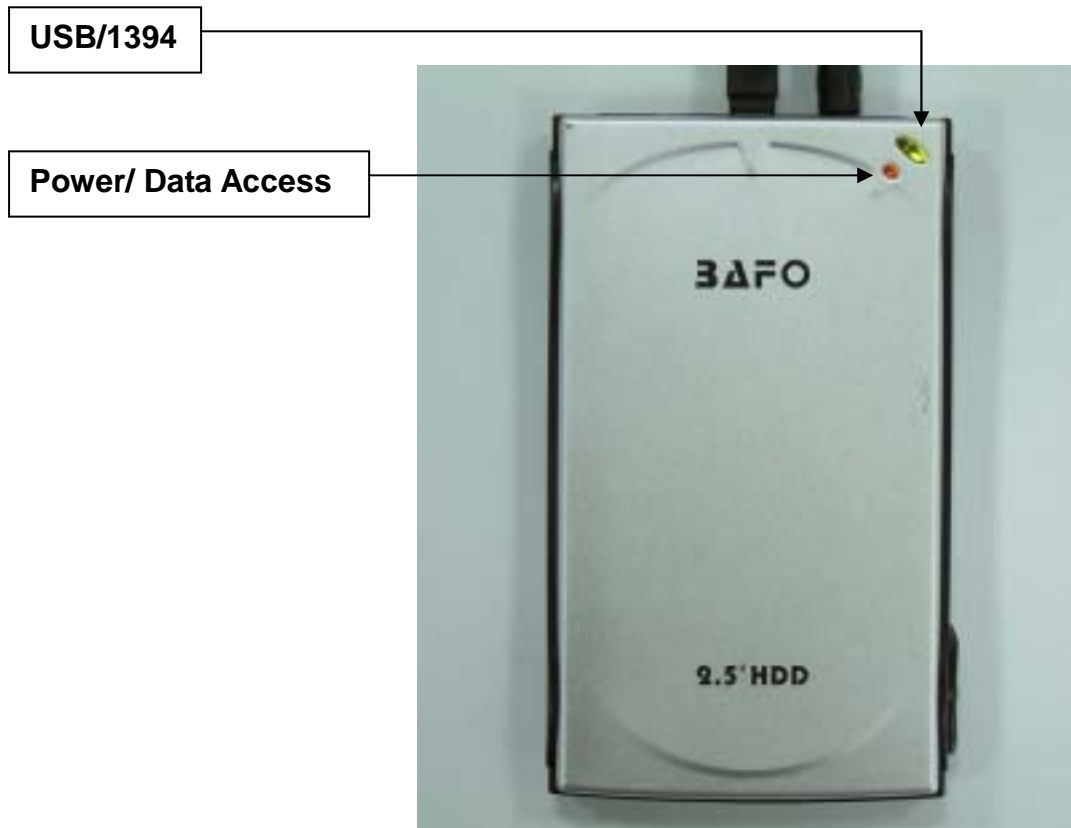
- Power PC G3, G4, or i-Mac
- Available USB port or IEEE1394 6pin or 4pin port
- CD-ROM drive
- Mac OS 9.1 or higher

## 5. Part name and Led functions

### 5.1 Part name and functions



### 5.2 Led functions



	Indicate Led	Status	Function
1.	USB/1394:	Green color	USB or 1394 connected
2.	Power/Data Access	Red color	Power connected
		Orange color	Read data/Write data

## 6. Hard Disk Installation

Follow the figures below to install 2.5" hard disk.

6.1 Push the knob to the LED side to open. (Figure 1).

6.2 Push the upper cover to the led side and move the cover out. (Figure 2).

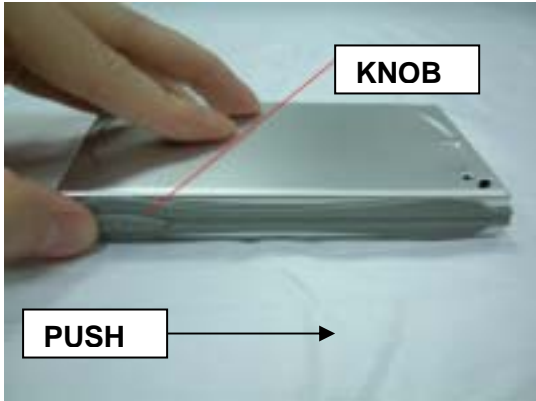


Figure 1

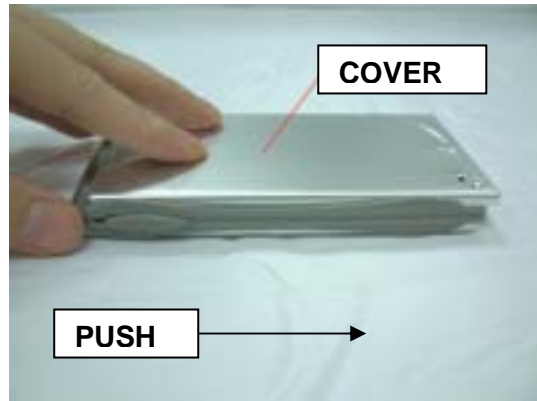


Figure 2

6.3 Pull up the upper cover and remove it. (Figure 3.4)

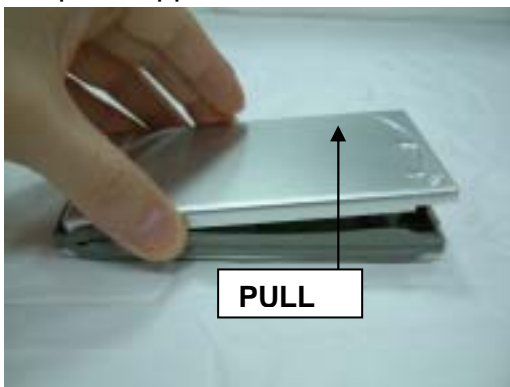


Figure 3



Figure 4

6.4 Put the Hard drive in the case and connect the Hard drive to the IDE connector. (Figure 3).

6.5 Put the upper cover back. (Figure 4).

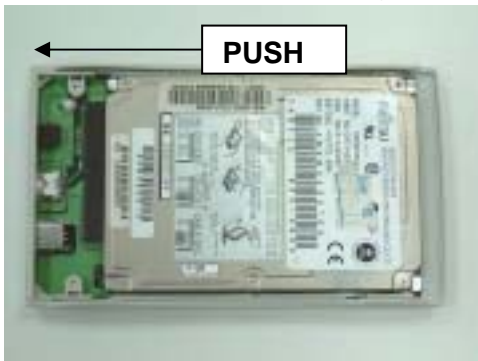


Figure 5



Figure 6

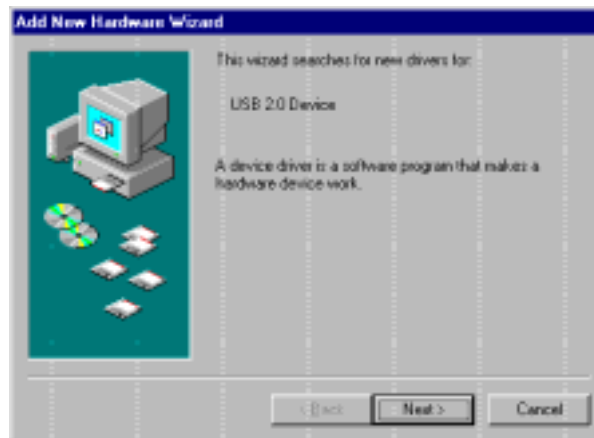
## 7. Driver Installation

**Attention: Only the USB at Windows® 98 need to install the driver, USB at Windows® ME/2000/XP and IEEE1394 does not need to install any driver.**

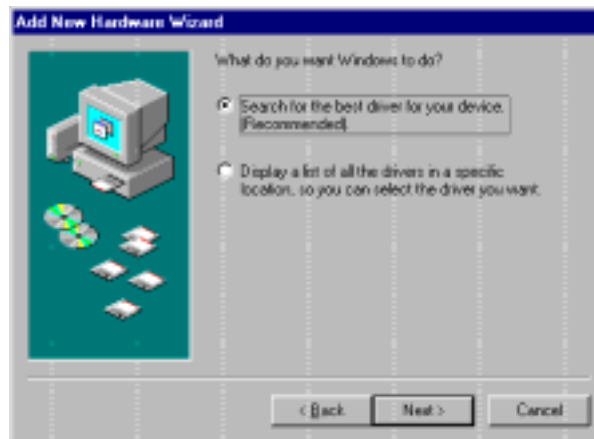
### 7.1 Windows® 98 Installation

7.1.1 Connect the USB port of **USB2.0/Combo 2.5” HDD enclosure** to PC with USB cable.

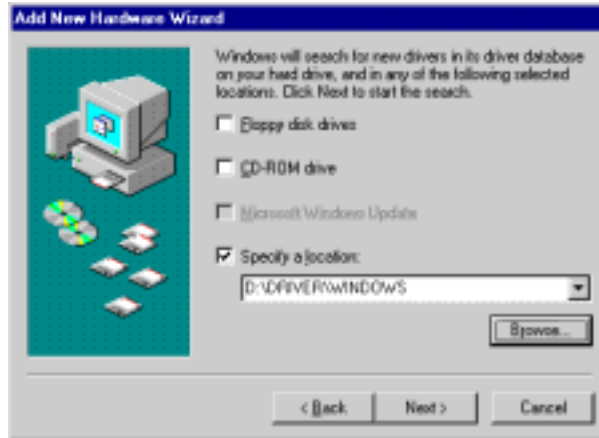
7.1.2 The **“Add New Hardware Wizard”** will appear as below, click on **“Next”** to continue.



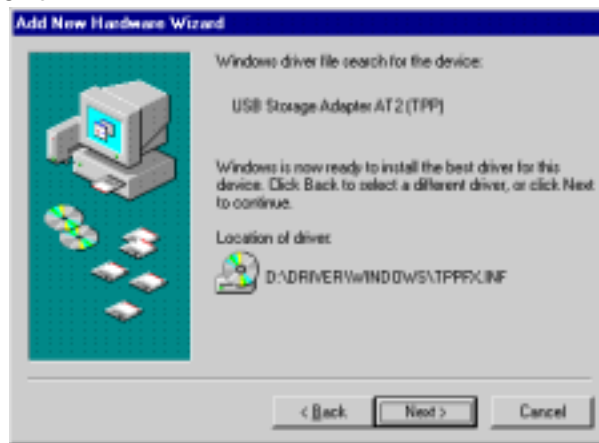
7.1.3 Choose **“Search for the best driver for your device (Recommended)”** then click **“Next”**



7.1.4 Select **“Specify a location”** and type **D:\DRIVER\WINDOWS** (D: represents CD-ROM) in the dialog box, then click **“Next”** (In this procedure, you have to put the driver CD into your CD-ROM)



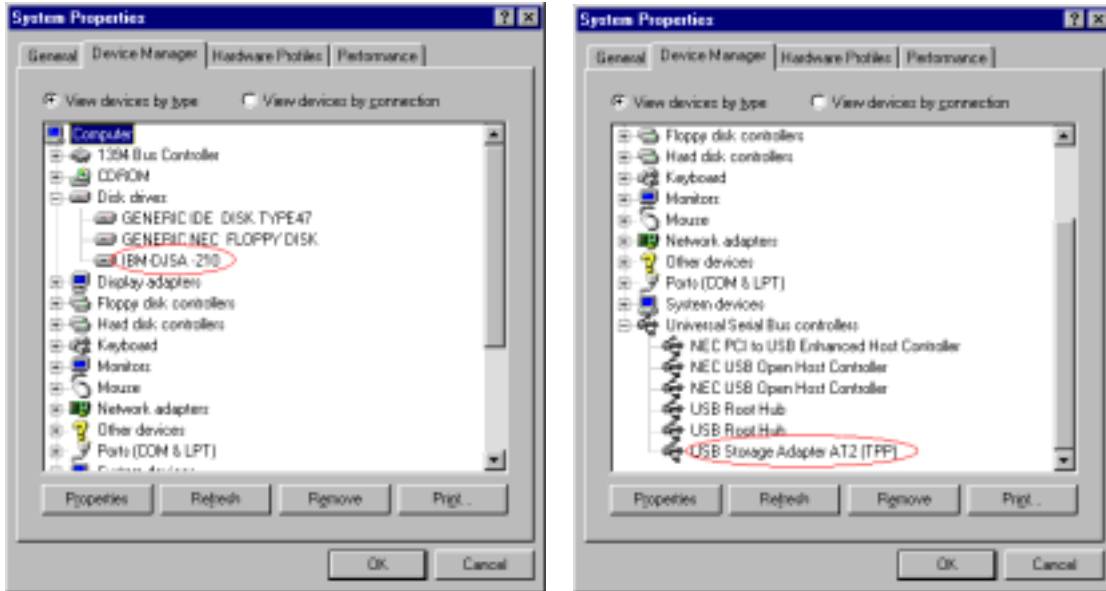
7.1.5 Windows® will search the driver for this device. Please make sure the driver that Windows® found is “D:\DRIVER\WINDOWS\TPPFX.INF”, and then click “Next”.



7.1.6 Click “Finish” to complete the “USB Storage Adapter AT2 (TPP)” installation.



7.1.7 After Windows® installed all the driver, you have to check “**My Computer**”-“**Control Panel**”-“**System**”- “**Hardware**”-“**Device Manager**” to make sure the driver has already installed, in the “**Disk Drives**” it will show a “**IBM-DJSA-210**” (This model number will vary with different Hard Disk), and in the “**Universal Serial Bus controller**” it will show a new item of “**USB Storage Adapter AT2(TPP)**”

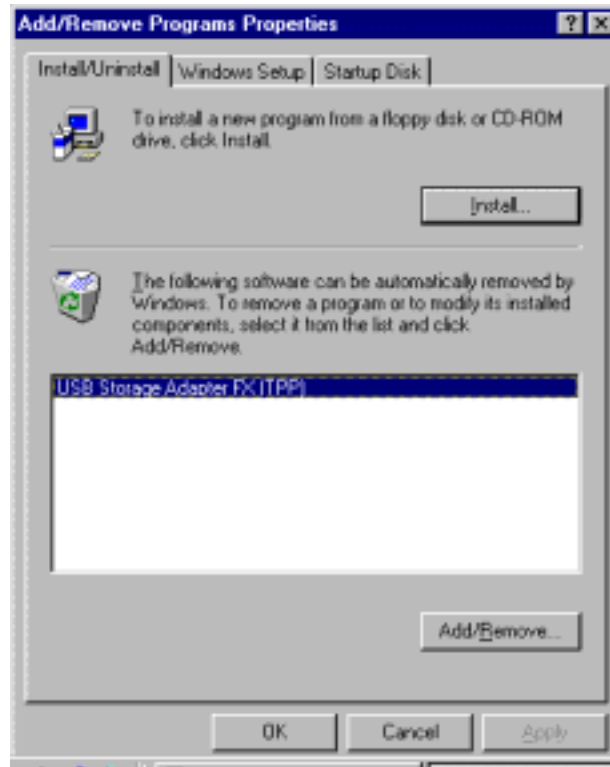


7.1.8 Double click on “**My Computer**” icon on the desktop, if the driver has already installed and can work properly, you can see a new DISK icon and named “**E:**” appears on the desktop.

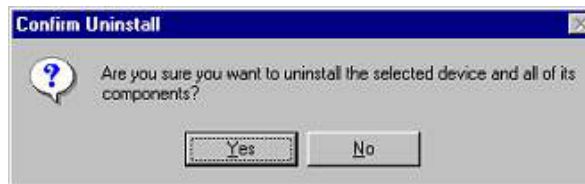


## 7.2 Windows® 98 un-installation

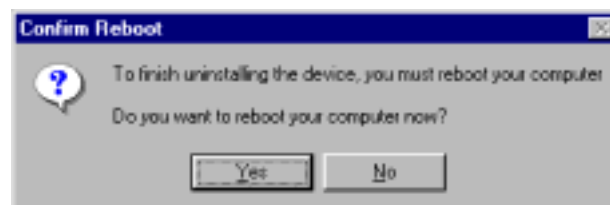
- 7.2.1 Double click on **“My Computer”** → **“Control Panel”** → **“Add/Remove Programs Properties”** and the dialog box as below will shown. Click on **“Add/Remove”** and then **“OK”** to remove this driver.



- 7.2.2 Click **“Yes”** to remove driver.

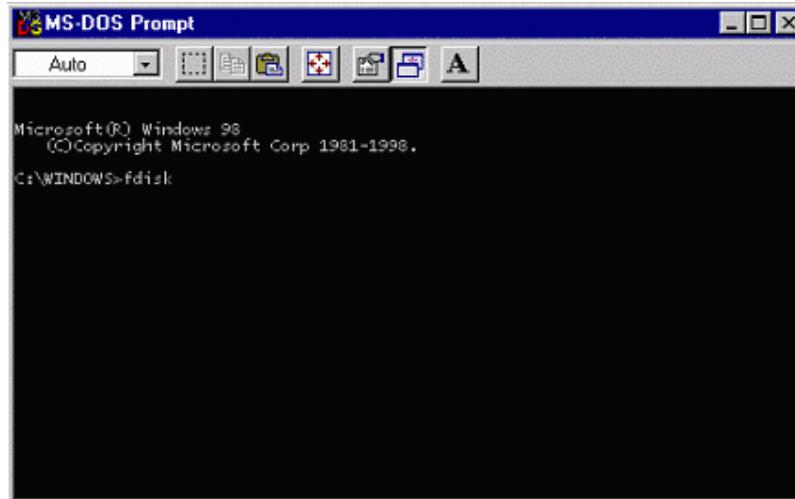


- 7.2.3 Click on **“Yes”** to restart computer and complete uninstall procedure.



### 7.3 Troubleshooting

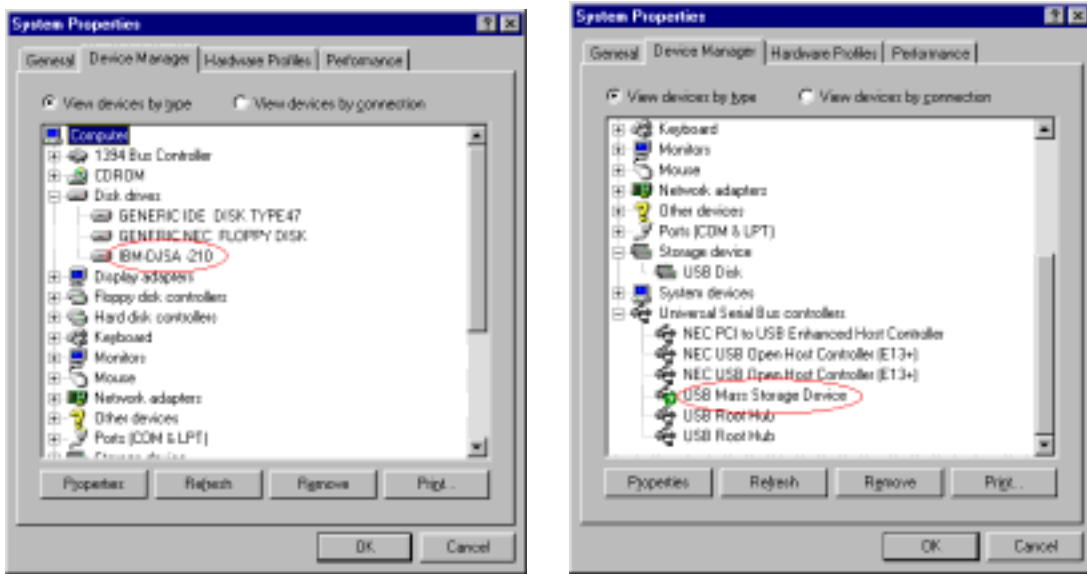
If the Hard Disk (brand new HD) didn't show in **"My Computer"** after the driver is being successfully installed, please go to **"MS-DOS Prompt"**, FDISK and FORMAT the new hard disk. (Please refer to MS-DOS instruction.)



## 7.4 Windows® ME installation

7.4.1 Connect the USB port of **USB2.0/Combo 2.5” HDD enclosure** to PC with USB cable. Then system will automatically load driver for this device.

7.4.2 After Windows® installed all the driver, you have to check “**My Computer**”-“**Control Panel**”-“**System**”-“**Hardware**”-“**Device Manager**” to make sure the driver has already installed, in the “**Disk Drives**” it will show a “**IBM-DJSA-210**” (**This model number will vary with different Hard Disk**), and in the “**Universal Serial Bus controller**” it will show a new item of “**USB Mass Storage Device**”

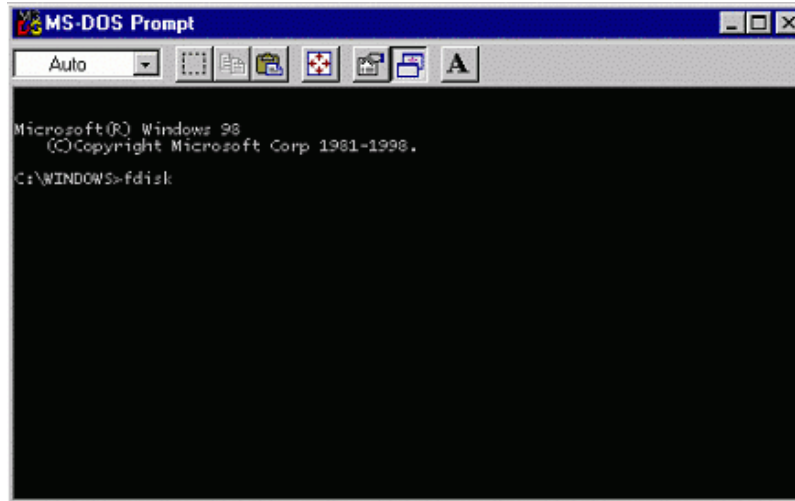


7.4.3 Double click on “**My Computer**” icon on the desktop, if the driver has already installed and can works properly, you can see a new disk icon and named “**E:**” appears on the desktop.



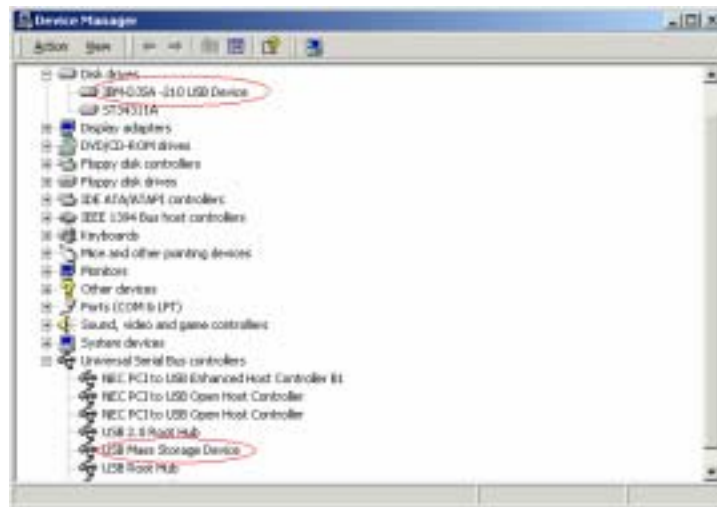
## 7.5 Troubleshooting

After the driver be successfully installed, but the hard disk does not shown at “**My Computer**”. If it is a brand new hard disk, please go to “**MS-DOS Prompt**” and **FDISK**, **FORMAT** new hard disk. (Please refer to MS-DOS instruction)



## 7.6 Windows® 2000 installation

- 7.6.1 Connect USB port of **USB2.0/Combo 2.5” HDD enclosure** to USB port of PC with a USB cable. Then system will automatically load driver for this device.
- 7.6.2 After Windows® installed all the driver, you have to check “**My Computer**”-“**Control Panel**”-“**System**”- “**Hardware**”-“**Device Manager**” to make sure the driver has already installed, in the “**Disk Drives**” it will show a “**IBM-DJSA-210 USB Device**” (**This model number will vary with different Hard Disk**) and in the “**Universal Serial Bus controller**” it will show a new item of “**USB Mass Storage Device**”.



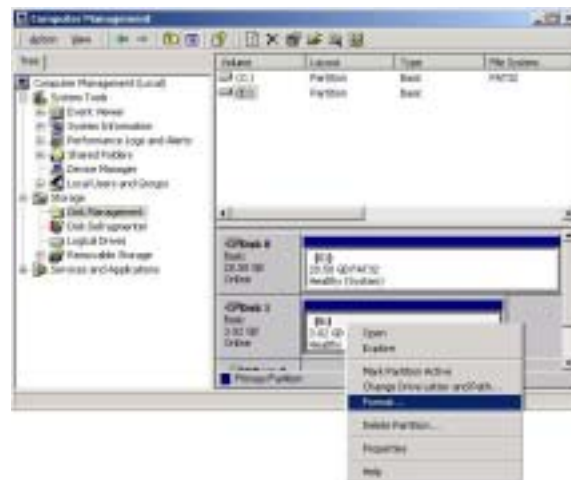
- 7.6.3 Double click on “**My Computer**” icon on the desktop, if the driver has already installed and can work properly, you can see a new CD-ROM icon and named “**E:**” appears on the desktop.



## 7.7 Troubleshooting

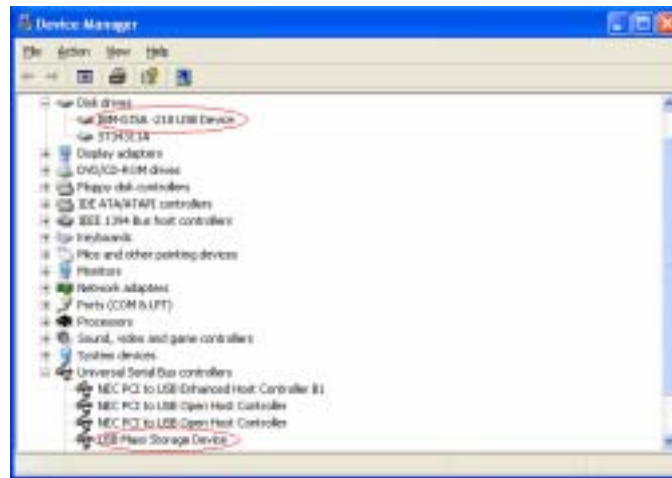
After you have successfully installed the driver, but there is no new hard disk shown at “**My Computer**”.

- 7.1.1 If it is a brand new hard disk, please go to “**Control Panel**”-“**Administrative Tools**”-“**Computer Management**”-“**Disk Management**” and then choose the new HD. Then follow the step to **FDISK** and **FORMAT** this new hard disk.



## 7.8 Windows® XP installation

- 7.8.1 Connect USB port of **USB2.0/Combo 2.5” HDD enclosure** to USB port of PC with a USB cable. Then system will automatically load driver for this device.
- 7.8.2 After Windows® installed all the driver, you have to check “**My Computer**”-“**Control Panel**”-“**System**”- “**Hardware**”-“**Device Manager**” to make sure the driver has already installed, in the “**Disk Drives**” it will show a “**IBM-DJSA-210 USB Device**” (**This model number will vary with different Hard Disk**) and in the “**Universal Serial Bus controllers**” it will show a new item of “**USB Mass Storage Device**”.



- 7.8.3 Double click on “**My Computer**” icon on the desktop, if the driver has already installed and can work properly, you can see a new CD-ROM icon and named “**E:**” appears on the desktop.



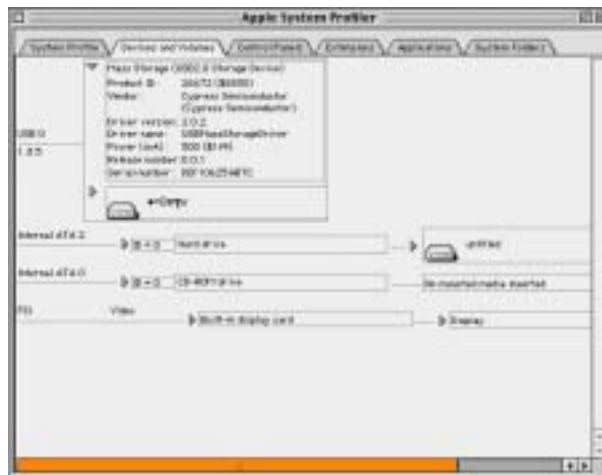


## 7.10 MAC OS 9 Driver installation

- 7.10.1 Turn on your Apple computer and make sure that the USB port is enabled and work properly.
- 7.10.2 Connect the **USB2.0/Combo 2.5” HDD enclosure** to your Mac machine, it will auto detect a new disk and show up a new disk volume at your desktop.



- 7.10.3 Before you start to use this device, please check the “**Apple System Profiler**”-“**Devices and volumes**” it will show a “**Mass Storage (USB2.0 Storage Device)**” under the USB 0 item and a “**USB UNTITLED**” hard disk.

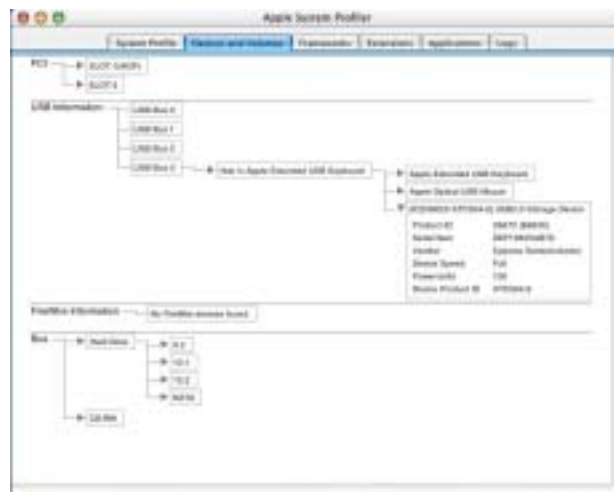


## 7.11 MAC OS X Driver installation

- 7.11.1 Turn on your Apple computer and make sure that the USB port is enabled and work properly.
- 7.11.2 Connect the **USB2.0/Combo 2.5” HDD enclosure** to your Mac machine, it will auto detect a new disk and show up a new disk volume at your desktop.



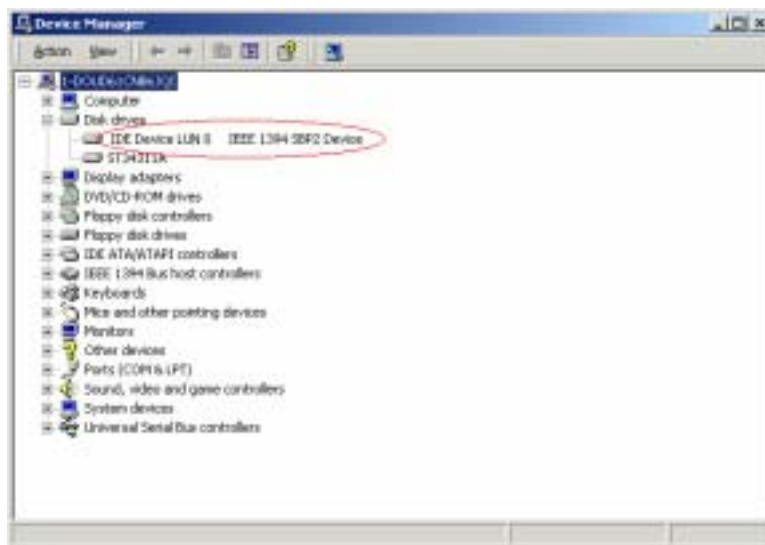
- 7.11.3 Before you start to use this device, please check the “**Apple System Profiler**”-“**Devices and volumes**” it will show a “**(IC25n020 ATCS04-0) USB2.0 Storage Device**” (**This model number will vary with different Hard Disk**) under the USB item.



## 7.12 IEEE1394 Driver Installation

**Attention: Only the Windows® 98 need to install the driver, IEEE 1394 at Windows® ME/2000/XP and MAC system does not need to install any driver.**

- 7.12.1 Connect IEEE 1394 port of **USB2.0/Combo 2.5” HDD enclosure** to IEEE 1394 port of PC with an IEEE 1394 cable. Then system will automatically load driver for this device.
- 7.12.2 In the Win98 system, you may have to put your Windows® 98 source CD into the CD-ROM drive and follow the screen to install the driver.
- 7.12.3 For example, in the Windows ME/2000/XP system you can see a new disk volume (**IDE Device LUN 0 IEEE 1394 SBP2 Device**) under the Disk Drives.



(e.g win2000)

## 8 FAQ

**Q:** The “Add New Hardware Wizard” or “Found New Hardware Wizard” dialog box does not show up.

**A:** When plug-in IEEE1394, this dialog won't show up. Only plug-in USB this dialog box will appear. Please check following items.

i). Power indicator on?

Make sure power adaptor properly plugs in power socket and power switch has been turn on.

ii). Plug out USB cable first and turn power switch off then on before plug in USB cable again.

iii). Make sure USB plug be inserted into enclosure USB connector properly

iv). Does computer and enclosure has been connected by 1394 cable?

IEEE1394 and USB can't be used simultaneous.

v). Driver of USB has been normally installed? Please refer to driver installation.

**Q :** After driver installed, there is no new hard disk model name show at “Disk Drivers” of “Device Manager” or “Universal Serial Bus controllers” does not have “BAFO USB-ATA/ATAPI Bridge Controller” or “?” appear.

**A:** Adjust jumper of hard disk to “Cable Select” or other setting and try again.

**Q:** If a brand new hard disk has been installed at enclosure. It shows “BAFO USB-ATA/ATAPI Bridge controller” in “Universal Serial Bus controllers”, but there is not any new hard disk at “Disk drivers”.

**A:** Please **FDISK** and **FORMAT** hard disk.

**Q:** What kind of the disk format can be used in MAC system?

**A:** Only the FAT/FAT32 format can be used in MAC system, it does not support the NTFS format.

**Q:** In Windows<sup>®</sup>, system will down when plug out IEEE1394 cable.

**A:** You can install the Windows<sup>®</sup> 98 Second Edition 1394 Storage Supplement on a computer running Windows<sup>®</sup> 98 Second Edition from “Recommended Updates” section of the following Microsoft Windows Update Web site

<http://windowsupdate.microsoft.com>

You can also download this update from the following Microsoft Web site

<http://www.microsoft.com/windows98/downloads/contents/WUCritical/1394/Default.asp>

## 9 Disclaimer

Information in this document is subject to change without notice. The manufacturer does not make any representations or warranties (implied or otherwise) regarding the accuracy and completeness of this document and shall in no event be liable for any loss of profit or any other commercial damage, including but not limited to special, incidental, consequential, or other damages.

No part of this document may be reproduced or transmitted in any form by any means, electronic or mechanical, including photocopying, recording or information recording and retrieval systems without the express written permission of the manufacturer.

All brand names and product names used in this document are trademarks, or registered trademarks of their respective holders.

## 10 FCC Statement

This device generates and uses radio frequency and may cause interference to radio and television reception if not installed and used properly. This has been tested and found to comply with the limits of a Class B computing device in accordance with the specifications in Part 15 of FCC Rules. These specifications are designed to provide reasonable protection against such interference in a residential installation. However, there is no guarantee that interference will not occur in a particular installation. If this device does cause harmful interference to radio or television reception, which can be determined by plugging the device in and out, the user can try to correct the interference by one or more of the following measures:

- Reorient or relocate the receiving antenna.
- Increase the separation between the device and receiver.
- Connect the computer into an outlet on a circuit different from that to which the receiver is connected.
- Consult the dealer or an experienced radio/TV technician for help. Consult the dealer or an experienced radio/TV technician for help.

## 11 Technical Support

**If you encounter any technical problem, please contact us through:**

**Taiwan First Line Electronics Corp.**

**No. 40, Chung-Shan Road, Tu-Cheng Industrial Area, Taipei Hsian, Taiwan, R.O.C.**

**Web site: [www.bafo.com.tw](http://www.bafo.com.tw)**

**OR**

**Quality Computer Accessories Inc. NJ**

**70 Ethel Road West, Unit 1, Piscataway, NJ 08854, USA**

**Web site: [www.bafo.com](http://www.bafo.com)**